



4.0 Function and Physical Fabric

4.1 Current Functions

The *Fremantle Prison Master Plan* (Palassis Architects, 2003) recommended a variety of compatible uses for the site with a primary focus on the following vision:

- to be Western Australia's premier heritage precinct and a heritage icon to the people of Western Australia.
- to provide a lasting legacy for the people of Australia by conserving and interpreting the most intact convict era site in Australia that will greatly enrich the cultural life of the state and nation.
- to be one of Western Australia's premier destinations for tourism, cultural and educational activities.
- to be a highly sought after location for a variety of uses, enhancing the vitality of the metropolitan and local area.
- to be a model for the care and management of exceptionally significant heritage properties in Australia.

The implementation of the Master Plan has seen a focus on the continuation of those uses that meet this vision. Where new uses have been introduced they have been tested against this vision. The primary functions of each component part of Fremantle Prison are identified in Figure 11. They include tourist, educational, interpretative, community and administrative uses. Some leasing for office accommodation is still in place on The Terrace.

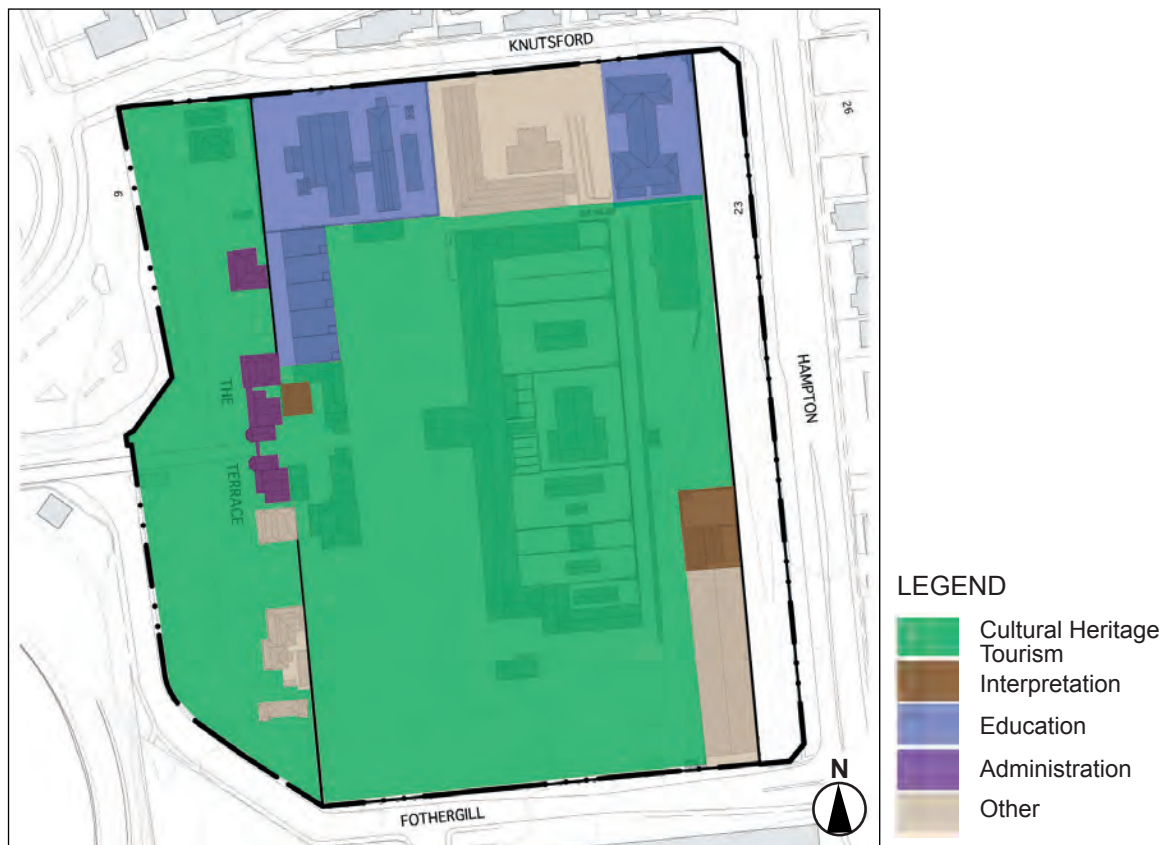


Figure 11. Plan of Fremantle Prison showing the current functions



4.1 Current Conservation Status

Fremantle Prison is currently in a good condition with the maintenance backlog identified in the 2003 Master Plan substantially reduced and an on-going program of both maintenance and conservation works in place. All the buildings at *Fremantle Prison* have been found to be structurally sound and there are no major or minor threats to the site.

A more detailed analysis of the condition of physical fabric is contained in the following section (4.3 Key Components), which identifies the issues that need to be addressed in the on-going conservation program.

A series of conservation projects have been undertaken at Fremantle Prison to improve the overall state of conservation of the site.

This list of major conservation works is based on information provided by the Executive Manager, Fremantle Prison, August 2008. Christopher Paterson (Palassis Architects) and Philip Griffiths (Philip Griffiths Architect) provided clarification of the scope of the conservation works at Fremantle Prison and the dates these works were carried.

A list of the major conservation works is outlined below in chronological order:

- | | |
|-----------|--|
| 1979 | No. 16 The Terrace - Conservation works and refurbishment for the establishment of the Fremantle Prison Museum |
| 1991 | Nos. 12 & 14 The Terrace - Conservation works and adaptation of the Gatehouse for Fremantle Prison Guardians including café in No 14.
No. 8 The Terrace - establishment of the Francis Burt Law Education Centre in Fremantle |
| 1992 | Nos. 2,4 & 6 The Terrace - Conservation works and adaptation for Bed & Breakfast Accommodation
Nos. 10 & 12 The Terrace - Conservation works and adaptation for office for Fremantle Prison Guardians and later (1999) Fremantle Prison Offices
Warders Cottages - Conservation and refurbishment works
New Division - Conservation works and establishment of the Business Incubator Centre
Hospital - Conservation works and establishment of the Fremantle Children's Literature Centre |
| 1993 | Female Division and West Workshops - Conservation works and establishment of TAFE, new studio in east yard |
| 1994 | East Workshops - Conservation works |
| 1995 | Main Cell Block - Conservation works and establishment of Interpretation Centre in the Special Handling Unit and excavation of fill from the basement area. |
| 1996-1997 | Main Cell Block - Conservation works to reinstate the cell range in 3 Division
Chapel - Conservation works to the façade of the chapel and artworks inside the chapel |
| 1997-1998 | The Terrace - conservation and reinstatement of gardens and fencing |
| 1998 | No. 18 The Terrace - Conservation works and refurbishment for Department of Education Centre of Excellence |



- 2000 Entry Complex - Conservation and refurbishment works to create the Visitors Centre in the former PWD store.
- Wray Gate - Conservation works
- Fairbairn Street Ramp - conservation works, including new crushed limestone surfacing by City of Fremantle
- 2004 Tunnels - Conservation, interpretation and establishment works for the tunnel tours
- 2005 Main Cell Block, the Hospital, New Division - Roof replacement, roof plumbing repairs and painting of external joinery
- Nos. 2, 4 & 8 The Terrace - Roof plumbing repairs and painting of external joinery
- Main Cell Block - Upgrade of electrical services
- Entry Complex - Exhibition Space upgraded and humidity controlled air conditioning installed to create a museum standard exhibition gallery
- Gatehouse - Façade restored
- Contact Visitor centre (former Guard House) - Conserved and converted for use as a gift shop
- 2006 No. 8 The Terrace - Treatment of internal rising damp
- Main Cell Block - Fire services upgraded
- 2007 Main Cell Block and Chapel - Restoration of the western elevation and Chapel facades
- Nos. 10 & 16 The Terrace – Roof replacement
- Hospital – Conservation of window bars and the north and east external walls
- Non-Contact Visits centre, Contact Visits centre – Roof replacement and establishment works for the café and souvenir shop. 2007
- 2008 Gatehouse – Main gates restored, upgrade of lighting and drainage to the western elevation, upgrade of public toilets
- No 10 The Terrace - Rectification of rising damp and the restoration of the internal fireplace



Chapel Restoration of External Facades

The restoration of the exterior of the Chapel in 2007 reveals the detailed conservation processes that are undertaken at *Fremantle Prison*. These conservation works were informed by a thorough investigation and analysis of the documentary and physical evidence and reference to the relevant conservation policies and were designed to:

- a) return the Chapel to as near original (convict era) presentation as possible
- b) conserve the masonry of the Chapel
- c) assist in conservation of the internal finishes

The statutory mechanisms in place to protect *Fremantle Prison* ensure that all works at the site are approved and monitored by the Heritage Council of Western Australia.

In the case of the restoration of the exterior of the Chapel, members and officers of the Heritage Council attended site to view the physical investigations that were found to reveal the original limestone work beneath the applied render and paint finish. The Heritage Council then considered the heritage impact statement, which outlined the analysis and relevant policies and the proposed conservation works and monitoring regime for the interior murals, prior to supporting the proposal.



Photographic views of conservation works to the Main Cell Block and Chapel, 2007



4.2 Key Components

The zones, which were identified within the *Fremantle Prison Master Plan* (Palassis Architects, 2003), are utilised here to describe the components of the place in 2008. These zones are identified in Figure 12.

The Fairbairn Street Ramp, Warders' Cottages and The Knowle are outside the *Fremantle Prison* site boundary, but have been considered due to their physical and historical links to the Fremantle Convict Establishment. (Refer to Figure 5)

Information in relation to each of the zones includes:

- location
- brief history
- brief description
- current use
- current condition
- floor plans
- photographs

(Copies of the current photographs are included for reference at larger scale in Appendix F)



**FREMANTLE PRISON
CONSERVATION MANAGEMENT PLAN**

4

February 2010



Figure 12. Site Plan of Fremantle Prison showing the location of each of the zones

LEGEND

A	Gatehouse and Entry Complex	H	Hampton Road Reserve
B	Main Cell Block Forecourt	I	East Reservoir and East Terrace
C	Main Cell Block	J	Pumping Station and Tunnels
D	Female Division and West Work shops	K	East Workshops
E	New Division	L	Southern End of Main Cell Block
F	Hospital	M	Development Zone
G	Perimeter Walls	N	South Knoll
		P	Development Zone
		Q	The Terrace



ZONE A: Gatehouse and Entry Complex

Location

This zone forms the entry to the site and is located in the centre of the western perimeter of the site, overlooking The Terrace (to the west) and the Main Cell Block Forecourt (to the east).

History

In 1854-55 convict labourers quarried the local Tamala limestone on the site to build the combined gatehouse and quarters (No. 12 & 14 The Terrace), entry court, and military and civil guardhouses with embrasures flanking an inner gate (designed by Royal Engineers Henry Wray and Manning). The complex was designed by Comptroller-General Edmund Henderson of the Royal Engineer, although it bears evidence of 135 years of additions and alterations. Despite the complexity of this fabric, the original function of the Gatehouse as the access control for the site has been retained.

Nos. 10 & 16 The Terrace were built during the 1850s campaigns for officers' associated with the depot. No. 10 was built in 1853 for the Chaplain and was appropriated by the Superintendent in 1878, and later by the prison bureaucracy for administration purposes. No. 16 was renovated in 1979 for use as a museum.

Description

The two-storey limestone Gatehouse, crowned with a central clock, visible from both the east and west, presents an imposing entry to the site. The Entry Complex comprises the single storey limestone former quarters (No. 12 & 14 The Terrace) and guard-houses, which flank the Gatehouse and the inner gates, and surround the central open courtyard. No. 10 The Terrace (also known as the Superintendent's House) is connected to the gatehouse with limestone walled buildings. The house is two-storey with rendered limestone walls and a corrugated iron roof behind parapet walls. A two-storey verandah extends along the west front. The plan is roughly square and there is a door from the house into the prison from the northeast room of the ground floor. No. 16 The Terrace is a two storey building, roughly square in plan, with painted limestone walls. Its roof is corrugated sheet-metal contained behind a parapet, while a two storey timber verandah has been built on the west side.

Current Use

It is being maintained as the primary entry point for visitors to the site and is being conserved and interpreted to reinforce the significance of the site as the centre of the convict establishment in Western Australia. Administrative and office functions are also housed in the complex.



FREMANTLE PRISON CONSERVATION MANAGEMENT PLAN

4

February 2010



Photographic Views

- A1 View of the Gatehouse from The Terrace
- A2 Aerial view of Entry Complex from the Main Cell Block
- A3 View of the Entry Complex, looking east showing the inner (Wray and Manning's) gates



Figure 13. Zone A: Gatehouse and Entry Complex

ZONE A

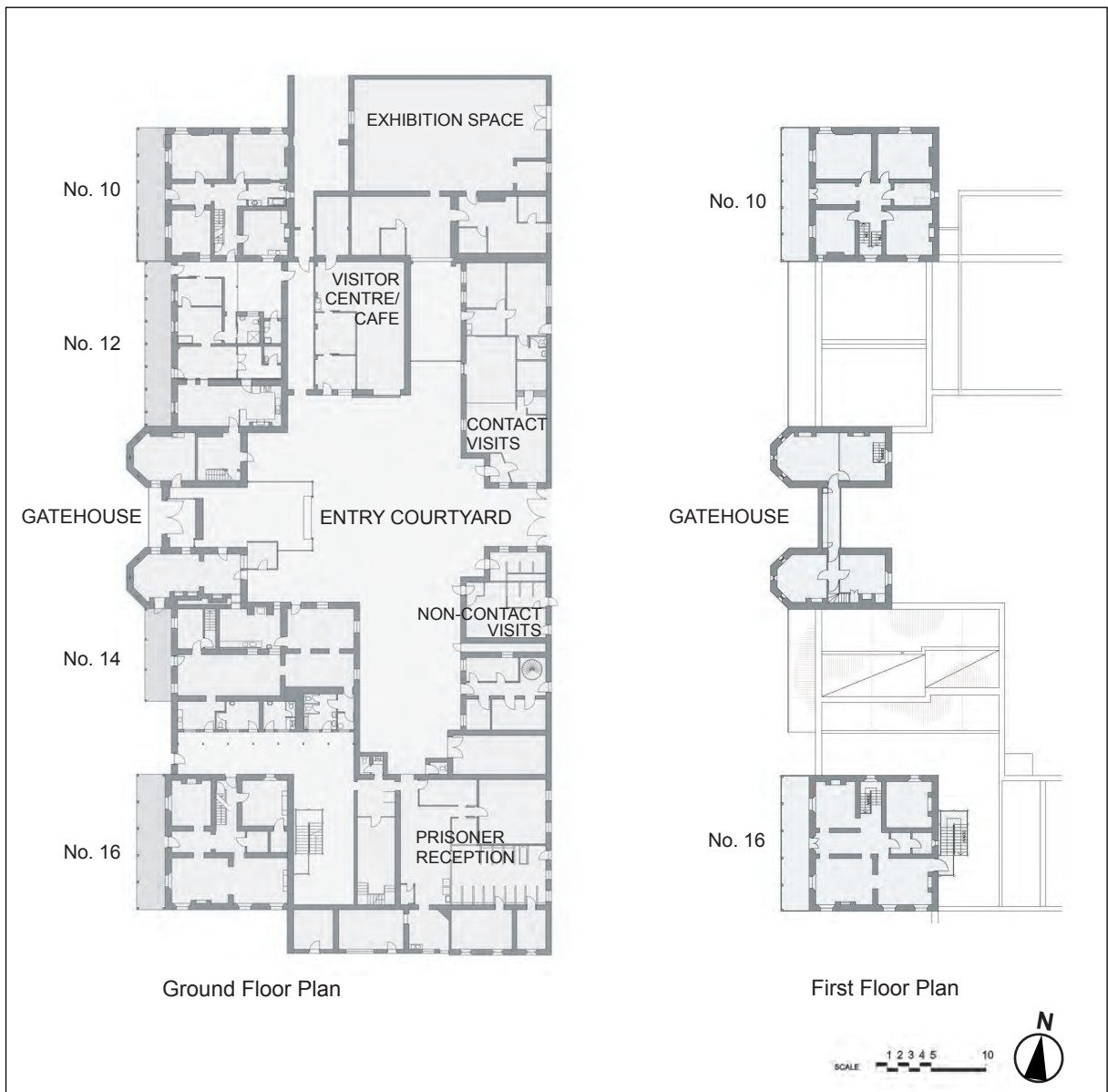


Figure 14. Zone A Floor Plans



Current Condition

The Gatehouse: Building Fabric

EXTERNAL

Roof	Corrugated galvanized iron
Walls	Limestone with raised joints, painted lime render dado at rear
Openings	Panelled and flush timber doors, timber hopper and double hung windows. Timber entry gates
Ground	Bitumen ground levels below floor level except where built up to provide plinths at north and south entries

INTERNAL

Ceilings	Varied, includes plasterglass with battens
Walls	Plaster on limestone
Floors	Concrete, timber, carpet laid over
Openings	Panelled timber doors
Staircases	Timber staircase and balustrade

The Gatehouse: Condition

Generally, the Gatehouse is in good condition.

Areas that require attention include:

- Applied render to rear facade
- Cement patching to external walls
- Localised failure of limestone walls
- Intrusive electrical services
- Intrusive office partitioning at first floor, northern tower
- Some isolated damp internally
- Intrusive and elevated ground treatment
- Timber entry gates are slightly warped, and difficult to operate

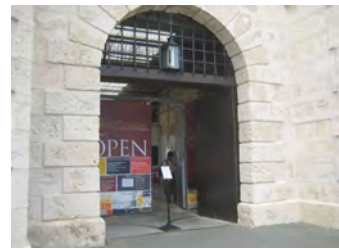
Photographic Views

A4	View of the front (west) facade of Gatehouse
A5	Detail view of the Gatehouse entry
A6	View looking west towards rear facade of Gatehouse
A7	Detail view of the metal sally port attached to the rear of the Gatehouse
A8	Detail of failed limestone, ground floor, southern tower
A9	View of intrusive electrical services

A4



A5



A6



A7



A8



A9





No. 10 The Terrace: Building Fabric

EXTERNAL

Roof	Corrugated galvanized iron
Walls	Rendered and painted limestone
Openings	Panelled timber doors, timber double hung windows
Verandah	Concrete floor at ground; timber board floor at first; corrugated galvanized iron roof
Ground	Garden at or close to floor level

INTERNAL

Ceilings	Various, including replacement plasterboard
Walls	Painted plaster
Floors	Timber, some carpeted
Openings	Timber door frames and panelled doors
Staircase/s	Timber staircase and balustrade

No. 10 The Terrace: Condition

Generally, No. 10 The Terrace is in fair to good condition.

Areas that require attention include:

- Extensive damp internally, particularly at the ground floor and basement levels (currently being rectified)
- Some isolated external Localised failure of the render
- Applied paint externally retarding vapour passage in walls
- Concrete verandah at ground floor
- Built up ground levels
- Intrusive electrical and plumbing services
- Reticulation over spray onto building
- Weathered timber floorboards to upper floor verandah



Photographic Views

A10	View looking north-east towards No. 10 The Terrace
A11	Detail of damage caused by damp to internal wall
A12	Detail of damage caused by damp to internal wall
A13	Detail of damage caused by damp in basement
A14	Detail of damage caused by damp in basement



No. 12 The Terrace: Building Fabric

EXTERNAL

- Roof Corrugated galvanized iron
- Walls Painted stone, uneven render patches to low level
- Openings Panelled timber and flush plywood doors, timber double-hung windows
- Verandah Concrete floor, corrugated galvanized iron roof
- Ground Garden, courtyard at or close to floor level

INTERNAL

- Ceilings Ripple iron, plasterboard
- Walls Plastered and painted masonry
- Floors Timber boards under carpet, concrete, vinyl over concrete
- Openings Timber panelled doors, double hung windows

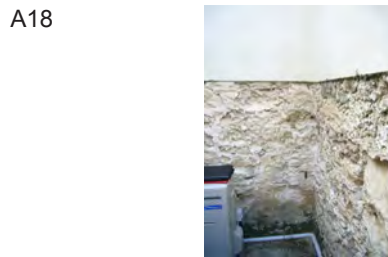
EXTERNAL FACILITIES

There are two external courtyards with an enclosed toilet in each.

- Roof Corrugated galvanized iron
- Walls Limestone and brick
- Floors Concrete
- Openings Timber framed doors
- Ground Concrete at floor level

No. 12 The Terrace: Condition

Generally the exterior of No. 12 The Terrace is in good condition, however the interior and external facilities are in poor to fair condition.



Photographic Views

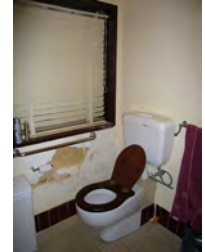
- A15 View looking east towards No. 12 The Terrace
- A16 View looking south along front verandah
- A17 Detail of render failure on courtyard wall
- A18 View of south courtyard showing applied render above shoulder height
- A19 View looking south-west across south courtyard showing deterioration of joinery



Areas that require attention include:

- Applied paint externally retarding vapour passage in walls
- Concrete verandah
- Built up ground levels
- Intrusive and damaged electrical services
- Some render failure
- Damage to the west wall of the northern office
- Damage to the floor of the northern office
- Extensive damage caused by damp to the kitchen ceiling
- Some drumminess to the walls of the conference room
- Damage caused by damp to the external toilet and storage space, including lifting of wall tiles in the storage space
- Localised failure of external limestone walls
- Inappropriate concrete render applied to external limestone walls
- Previous repairs to external walls

A20



A21



A22



A23



A24



Photographic Views

- A20 *View showing damage caused by damp to disabled toilet*
 A21 *Detail of damage caused by damp to kitchen ceiling*
 A22 *View looking west across conference room from kitchen*
 A23 *Detail of damage caused by damp in storage room off north courtyard*
 A24 *Detail of damage caused by damp to tiles in storage room*



No. 14 The Terrace: Building Fabric

EXTERNAL

Roof	Corrugated galvanized iron
Walls	Painted random rubble, uneven render patching at low level
Openings	Panelled timber doors, timber double hung windows
Verandah	Concrete floor, corrugated galvanized iron roof
Ground	Garden at or close to floor level

INTERNAL

Ceilings	Suspended metal pan system, in part
Walls	Varied – exposed random rubble, painted render
Floors	Concrete

Condition

Generally No. 14 The Terrace is in fair to good condition. The southern portion is currently being conserved and adapted.

Areas that require attention include:

- Damp internally
- Intrusive services and rain water goods
- Concrete verandah and floors
- Built up ground levels
- Applied paint externally retards vapour passage in walls
- Damaged external render



Photographic Views

A25 View looking east towards No. 14 the Terrace

A26 Detail of intrusive light fitting

A27 Detail of failed internal limestone wall

A28 Detail of intrusive services and box gutter



No. 16 The Terrace: Building Fabric

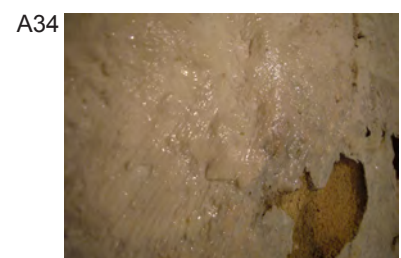
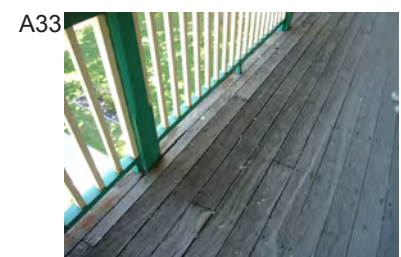
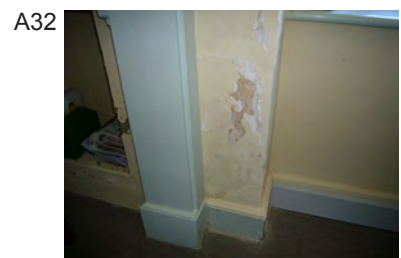
EXTERNAL

Roof	Corrugated galvanized iron
Walls	Rear: limestone with cement pointing; other: lime rendered and painted
Openings	Timber doors and frames, timber double hung windows
Verandah	Concrete floor, corrugated galvanized iron roof
Ground	Garden at floor level



INTERNAL

Ceilings	Plaster
Walls	Plastered and painted
Floors	Timber, carpet laid over
Openings	Timber door frames and panelled doors
Staircase/s	Timber staircase and balustrade



No. 16 The Terrace: Condition

Generally, No. 16 The Terrace is in fair to good condition.

Areas that require attention include:

- Applied paint externally retards vapour passage in walls
- Cement pointing to part rear façade
- Cement render applied to external walls
- Reticulation in drainage channel surrounding building, probably over spray onto walls
- Built up ground levels
- Concrete verandah
- Extensive damage caused by damp, particularly at ground floor and basement levels
- Extensive salt deposits on walls of basement with masonry damage
- Dirty chimneys, soot and mortar droppings

Photographic Views

A29	View of the front (west) facade of No. 16 The Terrace
A30	Detail of cement pointing on rear facade
A31	Detail of paint failure on north facade
A32	Detail of internal wall failure, ground floor
A33	Detail of weathering of verandah floorboards
A34	Detail of salt deposits, north wall, basement



Entry Courtyard: Building Fabric

EXTERNAL

- Roof Metal deck and translucent panels to sally port and ticket booth
- Walls Ticket booth – timber framed, sheet clad; sally port – metal bars with razor wire
- Openings Ticket booth – timber framed windows and doors; sally port – metal framed gates
- Ground Bitumen ground level elevated in part to internal floor level

INTERNAL

- Walls Ticket booth - bare limestone walls with painted cement sheet

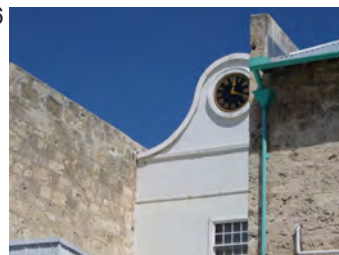
Entry Courtyard: Condition

Generally this area is in a fair to good condition and is currently being conserved.

A35



A36



A37



Photographic Views

- A35 *View looking west towards Gatehouse from Entry Courtyard*
- A36 *Detail view of clock in wall above sally port*
- A37 *View looking south-west towards Ticket Booth from Entry Courtyard*



Visitor Centre: Building Fabric

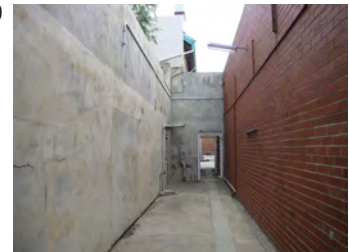
EXTERNAL

Roof	Metal skillion
Walls	Brick and limestone, some areas of rendered masonry
Openings	Fixed timber window frames, recent metal and plywood doors
Ground	Bitumen and pavers, varies, in part above floor level

A38



A39



Visitor Centre: Condition

The Visitor Centre is currently undergoing conservation works, particularly to the interior.

Areas that require attention include:

- Some isolated failure of external walls

A40



Photographic Views

- A38 View looking north towards Visitor Centre
A39 View looking north along west wall of Visitor Centre
A40 Detail of southern wall of Visitor Centre



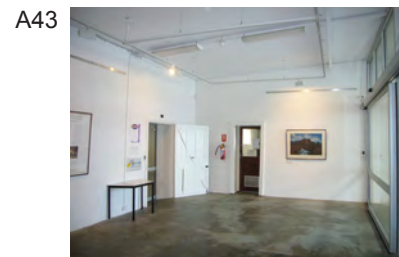
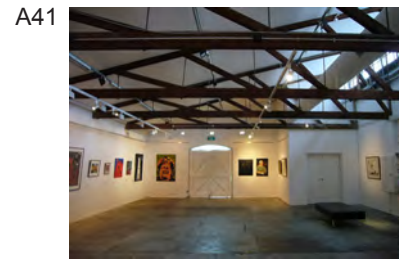
Exhibition Space: Building Fabric

EXTERNAL

- Roof Corrugated galvanized iron
- Walls Limestone
- Openings Timber clerestory windows, contemporary metal doors
- Ground Bitumen, at or close to floor level

INTERNAL

- Ceilings Raked plasterboard
- Walls Painted, limewashed limestone
- Floors Concrete



Photographic Views

- A41 *View looking east across Exhibition Space*
- A42 *Detail of render failure on west wall*
- A43 *View looking south across foyer*



Exhibition Space: Condition

Generally, the Exhibition Space is in good condition.

Areas that require attention include:

- Isolated failure to the external render
- Isolated internal failure to walls, salt damage

Contact Visits: Building Fabric

EXTERNAL

Roof	Corrugated galvanized iron
Walls	Coursed limestone with a limewash dado
Openings	Flush plywood doors, metal gates, double hung fixed timber windows with metal window bars
Ground	Bitumen, ground level slightly higher than floor

INTERNAL

Ceilings	Ripple iron, later suspended acoustic tile ceiling
Walls	Plastered and painted masonry
Floor	Bare timber boards
Openings	Timber framed six pane double hung windows with metal window bars, loop hole windows with metal grille to interior

Contact Visits: Condition

Generally, the Contact Visits centre is in fair condition. It is currently undergoing internal conservation works.

Areas that require attention include:

- Deterioration of external joinery
- Minor damage to internal walls caused by damp
- Concrete patches to external limewash render failure
- Built up ground levels

A44



A45



A46



A47



Photographic Views

- A44 *View of Contact Visits looking east across entry courtyard*
- A45 *Detail of entry showing previous repairs*
- A46 *Detail of southern facade showing dado failure*
- A47 *Internal view of Gift Shop*



Non-Contact Visits: Building Fabric

EXTERNAL

- Roof Corrugated galvanized iron
- Walls Limestone and limewash dado
- Openings Flush plywood doors and metal gates, timber double hung windows with metal bars
- Ground Bitumen, at floor level, or slightly above

INTERNAL

- Ceilings Ripple iron, later suspended acoustic tile ceiling
- Walls Plastered and painted masonry
- Floor Bare timber boards
- Openings Timber framed six pane double hung windows with metal window bars, loop hole windows with metal grille to interior

Non-Contact Visits Condition

Generally, the Non-Contact Visits centre is in fair condition. It is currently undergoing internal conservation works.

Areas that require attention include:

- External lime render failure
- Intrusive previous repairs to external walls
- Deterioration of external joinery
- Built up ground levels
- Exposed timber door cills

A48



A49



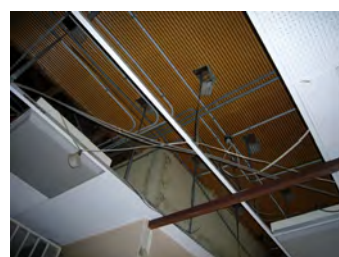
A50



A51



A52



A53



Photographic Views

- A48 View of Non-Contact Visits looking east across entry courtyard
- A49 View of north wall showing dado failure
- A50 View of external passageway
- A51 View of west wall showing previous repairs
- A52 Detail view of ripple iron ceiling above suspended ceiling
- A53 View looking north-east across Non-Contact Visits building



Reception Centre: Building Fabric

EXTERNAL

Roof	Corrugated galvanized iron
Walls	Limestone with some render patches
Openings	Timber doors and windows
Ground	Bitumen, at or close to floor level

A54



INTERNAL

Ceilings	Plasterboard in suspension system
Walls	Plastered and painted
Floors	Timber

A55



Reception Centre: Condition

Generally, the Reception Centre is in fair condition.

Areas that require attention include:

- Damage to external walls caused by damp, and some inappropriate repairs
- Extensive damage to internal walls caused by damp

A56



A57



A58



Photographic Views

A54	<i>View of Prisoner Reception looking south across Entry Courtyard</i>
A55	<i>View looking south-east across Reception</i>
A56	<i>Detail of damage caused by damp</i>
A57	<i>Detail of damage caused by damp</i>
A58	<i>Detail of build up of layers of paint</i>



ZONE B: Forecourt of the Main Cell Block

Location

This zone is located on the western side of the Main Cell Block and is bounded by a limestone wall to the north, the West Workshops, Gatehouse and Entry Complex to the west and the South Knoll to the south.

Description

It currently comprises bitumen paths and grassed garden beds delineated by raised brick edging, which were introduced in the 1970s, intrude upon the visual qualities of the space. A single storey red brick building, the Old Canteen (toilets), is located at the northern end of the zone.

History

The open Forecourt of the Main Cell Block has survived relatively intact since the 1850s where it formed the dramatic terrace upon which the Main Cell Block was built. Typically it was characterised by austere, hard surfaces of crushed limestone or bitumen and low scale vegetation.

Current Use

It is being retained and conserved as the primary open space of the site, providing an impressive setting for the Main Cell Block and unique spatial experience for visitors to the site.

B1



B2



B3



Photographic Views

- B1 View of the Forecourt looking southeast towards the Main Cell Block
- B2 View of Forecourt, looking southwest from the Main Cell Block
- B3 View of Forecourt, looking north
- B4 View of Forecourt, looking southwest
- B5 View of Forecourt, looking northeast from the Development Zone
- B6 View of from the Forecourt, showing the guard house on top of the wall in the on the northwest corner
- B7 View of Forecourt, looking south
- B8 View from the Forecourt, looking west
- B9 View from the Forecourt from the northern end, showing the Old Canteen (toilets)

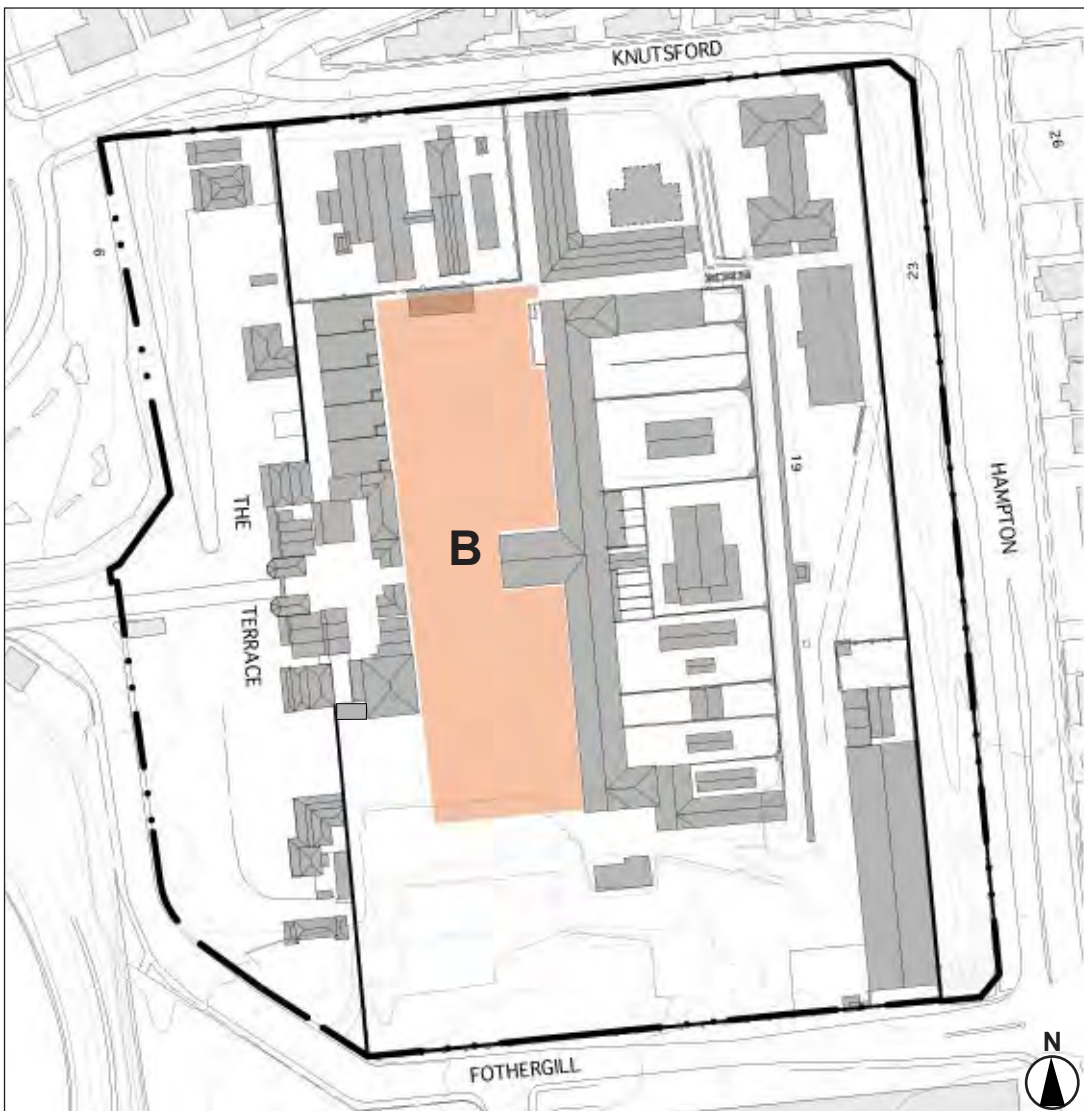


Figure 15. Zone B: Forecourt of the Main Cell Block



Current Condition

Forecourt: Fabric

GROUND FINISHES

The forecourt comprises a mix of bitumen surfaces, grassed areas and garden beds.

Forecourt: Condition

Generally, the Forecourt is in fair condition.

Areas that require attention include:

- Uneven surfaces

Old Canteen: Building Fabric

EXTERNAL

Roof Corrugated asbestos, with asbestos gutters (upper level roof unidentified),
profiled metal deck sunshade over door

Walls Brick, original portion to west, later extension to east, fibre cement sheet porch to extreme west

Openings Lined and flush timber doors, timber double-hung windows with metal bars and mesh

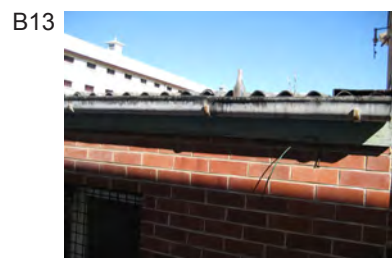
Ground Bitumen, at or just below floor level

INTERNAL

Ceilings Plasterboard

Walls Painted plaster

Floors Carpet on concrete



Photographic Views

B10 View looking north-west across Forecourt towards Old Canteen

B11 View looking north-east towards Old Canteen

B12 Detail of brick failure

B13 Detail of rain water goods and roof showing deterioration

B14 View of interior

B15 Detail showing detail of failure of dado



Old Canteen: Condition

Generally, the Old Canteen is in fair condition.

Areas that require attention include:

- Failure of bricks and mortar, especially to the western portion
- Failure of the render plinth
- Deterioration of external joinery, including fascia
- Deterioration of rain water goods, and other metalwork
- Asbestos roof and gutters

Forecourt Perimeter Walls: Building Fabric

EXTERNAL

Walls Limestone with limewash dado

Openings The metal “Wray Gates”, and other metal gates connecting to other zones, timber doors.

Ground Bitumen, grass, varies across site

Forecourt Perimeter Walls: Condition

Generally, the limestone walls forming the perimeter are in poor to fair condition.

Areas that require attention include:

- Failure of the limestone
- Failure of the lime wash dado
- Multiple different repairs, in varying degrees of failure
- Ground treatments adjacent to walls, are in parts contributing to failure

B16



B17



B18



Photographic Views

B16 View looking south-west towards perimeter walls of the Forecourt

B17 View of north-west corner showing previous repairs

B18 Detail of sample masonry panel showing render removal and multiple earlier repairs to north wall of Forecourt



ZONE C: Main Cell Block

Location

The Main Cell Block is the largest single building at Fremantle Prison and is located in the centre of the site, directly east of the Gatehouse and Entry Complex, across the Forecourt.

History

The Main Cell Block was constructed from limestone quarried on the site when building commenced in 1852. Designed by Edmund Henderson, the plan was based on Joshua Jebb's prison designs at Pentonville Prison (London) and Portland Prison (Dorset). Edmund Henderson adapted elements of these designs freely and in terms of a combination of cell size, materials and range form, there is nothing quite like Fremantle in England and Australia. More than any other building, the Main Cell Block illustrates the functioning of the depot and subsequent prison – the processes of confinement, surveillance and separation.

Description

The Main Cell Block is the focal and dominating feature of the site and it has come to symbolise the imperial convict era in Western Australia. This impressive limestone building is four-storeys high and approximately 150m long on the north-south axis. On the western side, the Chapel projects west from the centre of the building and creates an imposing central elevation. On the eastern side are limestone walled exercise yards and an enclosed separate Refractory building.

It retains substantial physical evidence of its construction during the convict era and the prison's subsequent use as a colonial and state prison.

Current Use

It is being conserved and interpreted as the prominent landmark feature of the site.

Photographic Views

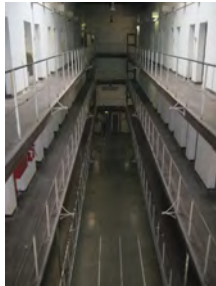
- C1 *View of the front (west) facade of the Chapel*
- C2 *View looking north-east across Forecourt towards Main Cell Block*
- C3 *View of the eastern side of the Main Cell Block, looking southwest from the East Terrace*



Figure 16. Zone C: Main Cell Block



C4



C5



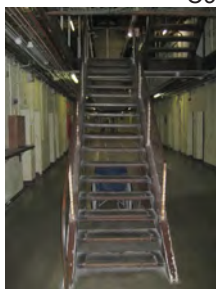
C6



C7



C8



C9



C10



C11



C12



C13

Photographic Views

- C4 *View of the Main Cell Block, showing the entry at the 2 Division*
- C5 *Interior view of the Main Cell Block*
- C6 *Interior view of the Main Cell Block, showing a reconstructed cell*
- C7 *Interior view of the Main Cell Block, showing paintings on the cell walls*
- C8 *Detail view of a cell door*
- C9 *Detail view of internal stairs*
- C10 *Interior view of the Main Cell Block, showing interpretation elements along the passageway*
- C11 *Interior view of the Chapel, looking west*
- C12 *Interior view of the Refractory*
- C13 *Interior view of the Gallows*

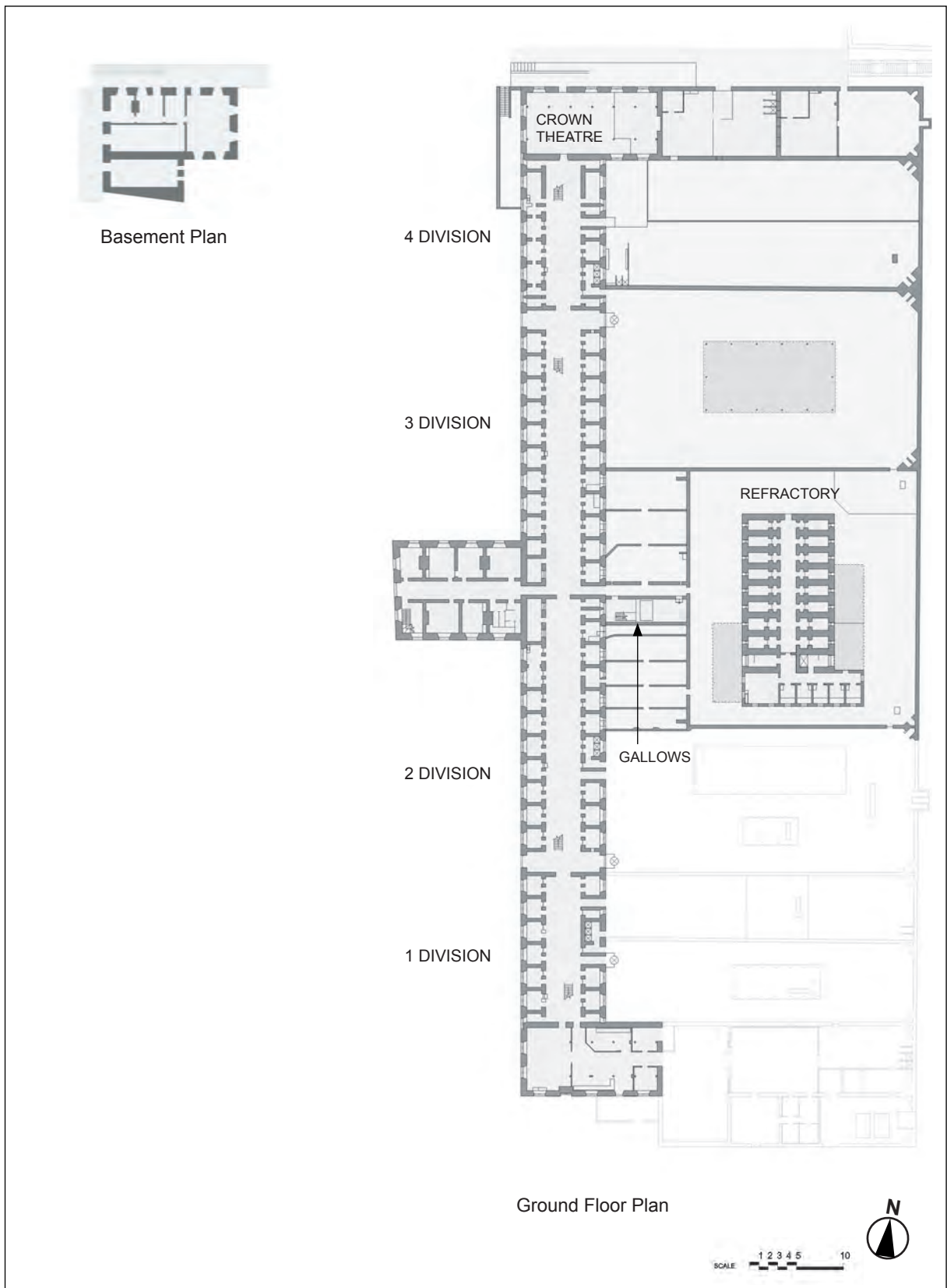


Figure 17a. Zone C Lower Floor Plans



FREMANTLE PRISON CONSERVATION MANAGEMENT PLAN

4

February 2010

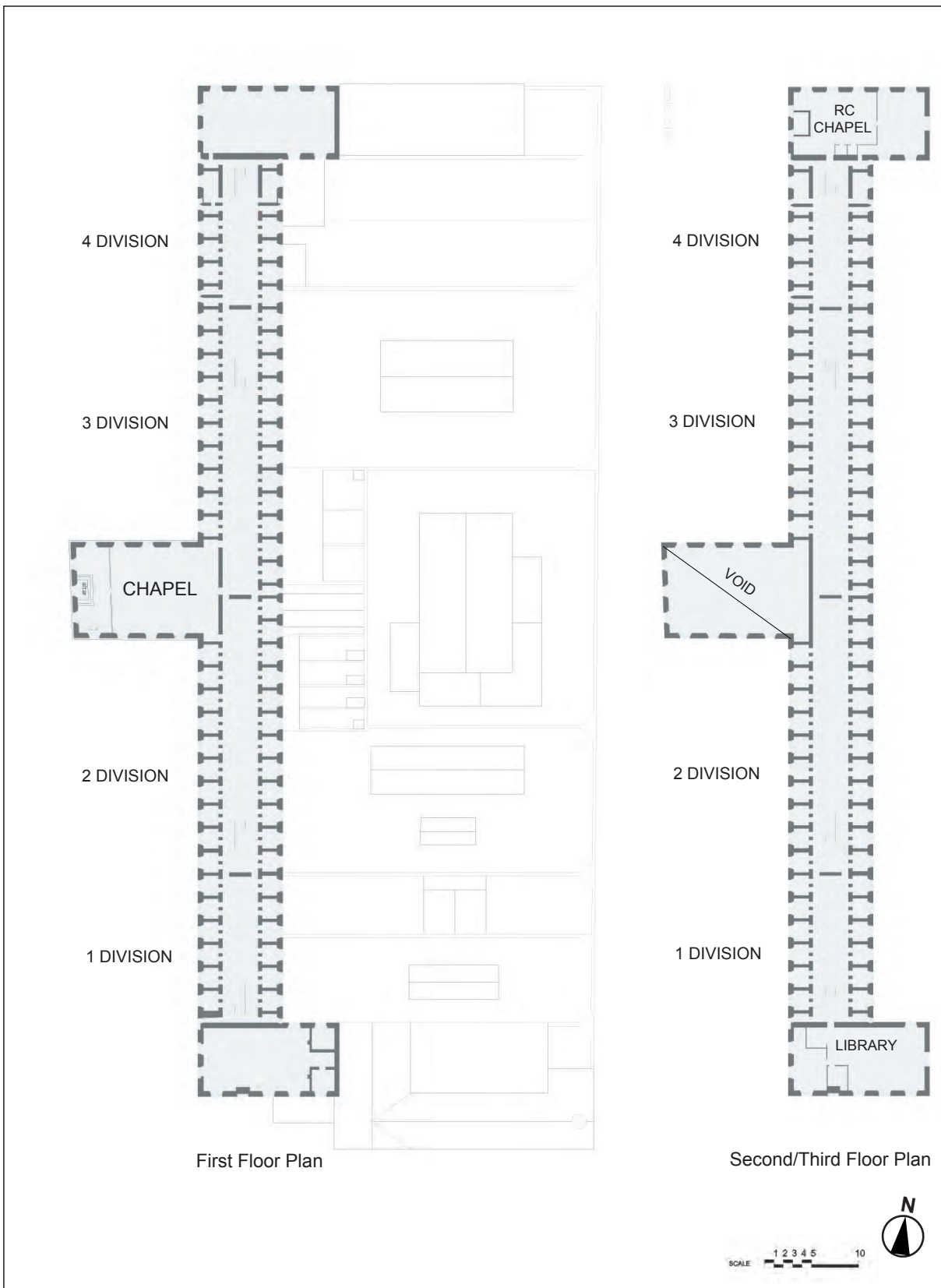


Figure 17b. Zone C Upper Floor Plans



Current Condition

Main Cell Block: Building Fabric

EXTERNAL

Roof Corrugated pre-finished iron

Walls Coursed limestone

Openings Timber doors and frames, timber window frames with cast iron hoppers and cast iron bars

Ground Grass, spoon drain, bitumen to rear, at or close to floor level

INTERNAL

Ceilings Timber, underside of roof exposed in central galleries

Walls Painted limestone, plaster and paint finish in cells

Floors Concrete at ground (over stone flags), timber at upper levels

Staircase/s Metal

Main Cell Block: Condition

Generally, the Main Cell Block is in a fair condition.

Areas that require attention include:

- Isolated failure of the walls internally
- Masonry failure to east, north and south elevations

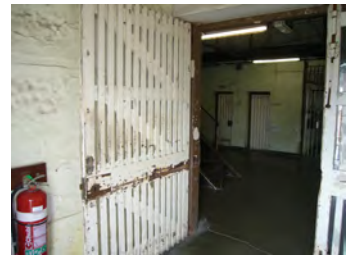
Photographic Views

- C14 Detail view of the northern end of the Main Cell Block
- C15 Detail of timber entry gate to 2 Division
- C16 View looking north along ground floor of 1 Division
- C17 View of Catholic Chapel
- C18 Detail of low level wall failure, ground floor, 1 Division
- C19 Detail of prison cell handpainted by prisoner

C14



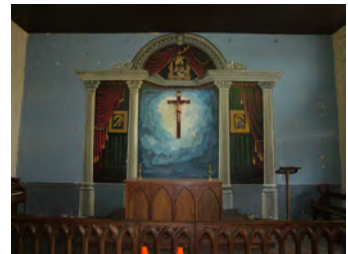
C15



C16



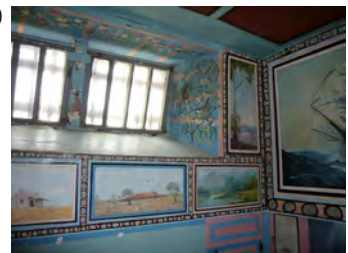
C17



C18



C19





The Chapel: Building Fabric

EXTERNAL

Roof Corrugated pre-finished iron

Walls Coursed limestone

Openings Timber double hung windows

INTERNAL

Ceilings Timber (underside of roof)

Walls Painted plastered limestone. Evidence of earlier painted stencils and decoration

Floors Timber, carpet laid over

The Chapel: Condition

Generally, the Chapel is in a fair to good condition. The western façade, has, in 2007, been subject to major conservation works as part of the Main Cell Block works and is in good condition.

Areas that require attention include:

- Previous failure of the western limestone wall at high level
- Water leaks at high level on the eastern wall in the choir loft



Photographic Views

C20 View of front (west) facade of the Chapel

C21 Interior view of Chapel looking west

C22 Detail showing high level failure of internal render

C23 Detail of paint scrape on western wall, showing underlying decoration



Refractory Cell Block: Building Fabric

EXTERNAL

Roof	Concrete roof, corrugated asbestos and iron extensions
Walls	Rendered and painted limestone, small brick extension, metal framed sunshade
Openings	Timber door frames, timber window frames
Ground	Bitumen, at or close to floor level



INTERNAL

Ceilings	Timber lined
Walls	Painted plaster
Floors	Concrete, some under carpet
Openings	Timber framed windows with metal bars, timber framed lined doors, cell doors have wrought iron bolts and hardware

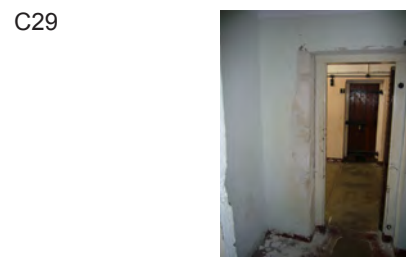
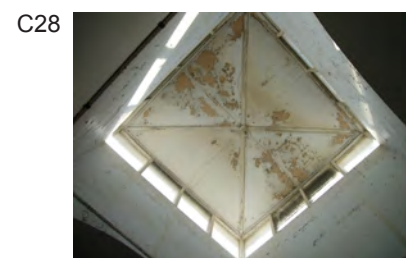


Refractory Cell Block: Condition

Generally, the Refractory Cell Block is in poor to fair condition.

Areas that require attention include:

- Failure of the limestone
- Failure of the applied render and paint finishes
- Deterioration of the external joinery
- Deterioration of metal canopy structures
- Asbestos cement products are hazardous
- Intrusive earlier repairs
- Failure of internal walls
- Deterioration of floor surfaces



Photographic Views

- C24 View of north-west corner of Refractory Cell Block
- C25 Detail of wall showing failure of dado and previous repairs
- C26 Detail of previous repairs to walls
- C27 View looking along corridor of Refractory Cell Block
- C28 Detail of skylight in Refractory Cell Block
- C29 Detail showing failure of plaster surface



3 Division Yard: Building Fabric

EXTERNAL

Roof	Corrugated asbestos sheet with asbestos trim
Walls	Coursed and squared limestone Metal post and truss shade structure
Ground	Bitumen, at or close to ground level

3 Division Yard: Condition

Generally, 3 Division Yard is in poor condition.

Areas that require attention include:

- Failure of the limestone walls and dado
- Previous repairs to the walls, including cement patches
- Deterioration of the metal shelters
- Deterioration of murals on the walls
- External toilets and other water services have been capped with concrete. Doors and screens have not been maintained



Photographic Views

- C30 View looking east across 3 Division Yard
C31 Detail showing deterioration of wall
C32 View looking west across 3 Division Yard
C33 Detail of art work by prisoners
C34 Detail of previous repairs to walls



4 Division Yard: Building Fabric

EXTERNAL

Roof	Corrugated metal and plastic roofs to shade structures
Walls	Coursed and squared limestone, lime washed lime render dado, some cement render patches, metal mesh and razor wire extensions to masonry walls
Ground	Bitumen ground finish at or close to internal floor finishes

4 Division Yard: Condition

Generally, 4 Division Yard is in poor to fair condition.

Areas that require attention include:

- Failure of the limestone walls and dado
- Previous repairs to the walls, including cement patches
- External toilets and other water services have been capped with concrete. Doors and screens have not been maintained

C35



C36



C37



C38



Photographic Views

C35	View looking east across 4 Division Yard
C36	View looking west across 4 Division Yard
C37	Detail of previous repairs to walls
C38	Detail of excavation in north-west corner



ZONE D: Female Division and West Workshops

Location

The Female Division is a physically distinct group of buildings located to the north-west of the Main Cell Block, hidden from view by enclosing walls. The West Workshops are a series of work spaces between the Female Division and the Entry Complex.

History

Built in the 1850s as a service area for the Fremantle Convict Establishment, the original group of buildings included a cookhouse, bakehouse and laundry. In 1886 a wall was built around the service buildings and they were converted for use as the first separate women's prison in Western Australia. The Female Division was extended in the 1890s, and when it was completed in 1910, it differed from the contemporary male accommodation in having smaller cells and more habitable interior facilities such as day and lying-in rooms.

The West Workshops were built in 1900-01 after a commission of inquiry supported attempts to provide work for prisoners. The five workshops accommodated traditional trades, namely painters, matmakers, shoemakers, bookbinders and tailors.

In 1993 the buildings were adapted for use by Department of Training's South Metropolitan College of TAFE's Art and Design. This included alterations to the original building to provide new openings that enabled access to the studios from the Prison Terrace for the staff and students.

A new steel-framed studio was constructed in the eastern yard in accordance with the *Fremantle Prison Conservation Policy*.

Description

Female Division is a single storey limestone building with a red brick upper storey addition and distinctive monitor roof. The West Workshops are a single storey limestone building with a squared limestone rubble parapet wall on the east concealing the saw tooth roof structure.

Current Use

This zone is being conserved and adapted as a centre for creative educational purposes.

Photographic Views

- D1 *Aerial view of the Female Division, looking northwest*
- D2 *View of the Female Division, looking northeast from the entrance on The Terrace*
- D3 *View of northern elevation of the Female Division*
- D4 *View of the Female Division, looking southwest*
- D5 *View of the northern courtyard*
- D6 *Detail view of the eastern block of the Female Division*
- D7 *View of the studio located on the eastern side of the Female Division*
- D8 *View of the southern courtyard*
- D9 *View of the Female Division, showing the current reception office on the southeast side*



Figure 18. Zone D: Female Division and West Workshops



FREMANTLE PRISON CONSERVATION MANAGEMENT PLAN

4

February 2010

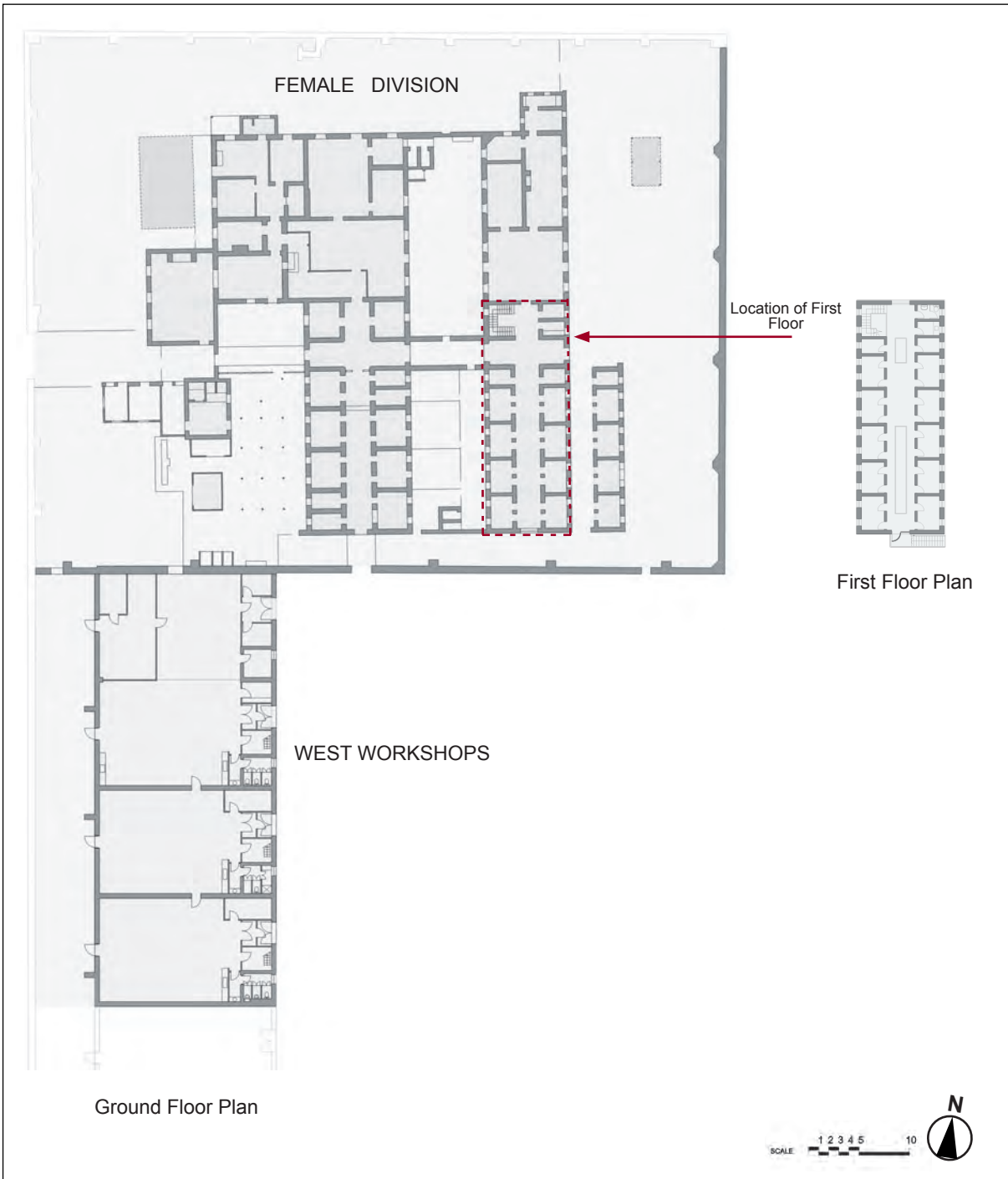


Figure 19a. Zone D Floor Plans

Figure 19b. Zone D First Floor Plan

ZONE D



Current Condition

Female Division: Building Fabric

EXTERNAL

Roof	Corrugated galvanized iron, and corrugated asbestos
Walls	Various – predominantly limestone, also brick and weatherboard
Openings	Timber doors, various timber window frames with metal bars, metal entry gates to the Terrace
Ground	Pavers and grass, generally high

INTERNAL

Ceilings	Timber, plaster
Walls	Painted plastered limestone
Floors	Timber
Staircases	Metal

Female Division: Condition

The Female Division is in fair to good condition.

Areas that require attention include:

- Extensive deterioration of the exterior stonework
- Previous poor repairs of the stonework
- Fretting brickwork, and tuckpointed brickwork now rendered over (to office)
- Damage to brickwork caused by rusting metal window bars and other metal fixtures
- Deterioration of external joinery
- Some failure of the paint and plaster applied to internal walls
- The metal entry gates to the Terrace are in poor condition

Photographic Views

D10	View of north-west corner of Female Division
D11	Detail of joinery deterioration
D12	Detail of north facade showing previous repairs, intrusive services
D13	Detail of east facade showing failure of wall
D14	Detail showing cracking caused by fixtures embedded in brick work
D15	View of entry gates showing deterioration





West Workshops: Building Fabric

EXTERNAL

Roof	Corrugated galvanized iron
Walls	Coursed limestone, areas of render, including cement and lime plaster
Openings	Timber window frames with bars, clerestory windows to studios, contemporary flush doors
Ground	Bitumen and pavers, generally at or close to floor level

INTERNAL

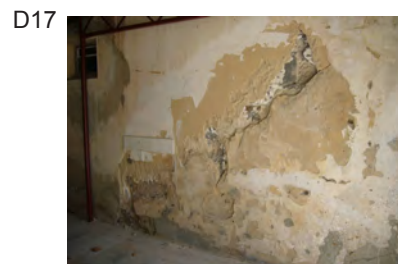
Ceilings	Timber lining boards, exposed underside of insulation
Walls	Painted rendered limestone
Floors	Concrete

West Workshops: Condition

Generally, the Western Workshops are in fair to good condition.

Areas that require attention include:

- Extensive damage caused to perimeter and exterior limestone walls
- Drumminess of renders/plasters to perimeter and exterior walls
- Render applied to exterior walls
- Previous poor repairs to the exterior walls
- Some isolated damage caused by damp to interior walls
- Intrusive air-conditioning plant in the space between the exterior and perimeter walls.



Photographic Views

- D16 *Detail of intrusive air conditioning units to West Workshops*
- D17 *Detail of western wall showing deterioration*
- D18 *Detail of perimeter wall adjacent to West Workshops showing failure and previous repairs*
- D19 *Detail of north facade showing concrete dado*
- D20 *Detail of exposed limestone to internal south-west corner*



ZONE E: New Division

Location

New Division is located directly north of the Main Cell Block adjacent to the northern perimeter wall. It is linked to the Main Cell Block with a ground floor covered passage at the entry on the southwest corner.

History

New Division was completed in 1907 as a response to over-crowding of the justice system and an attempt by the prison administrators to implement what they saw as the latest prisoner management strategies. The introduction of the 'Separate System' was manifest in the building of 'the cage', a 30-unit radial exercise yard for prisoners which was demolished within 5 years. The fabric thereafter reflected more conventional twentieth century regimes and army occupation during World War II.

A row of cells on the ground floor of the western wing of New Division was utilised for the containment of prisoners on death row prior to the abolition of the death penalty in 1984 (last prisoner hanged in 1964). Three of these cells at the northern end were converted to house a prisoner sentenced to strict security life imprisonment in the 1980s.

In 1992-93 works were carried out to adapt New Division for use as a Business Incubator.

Description

The building is L shaped in plan, three stories high with walls of regular coursed limestone blocks with rock face. There is an area of archaeological interest (the remains of the radial exercise yards) in the courtyard of this zone.

Current Use

It is being conserved and adapted for use as a mixed-use zone and currently houses a Business Incubator.

Photographic views

- E1 Exterior view of the New Division, looking southwest*
- E2 Exterior view of the New Division from the southeast side, showing the western block*
- E3 Exterior view of the New Division, looking south on the western side*
- E4 View of the exercise yard of the New Division*
- E5 View of the access way at the northern end of New Division*
- E6 Interior view of the New Division showing the central atrium*
- E7 Interior view of the New Division ground floor looking north towards the entry door*
- E8 Interior view of the New Division, showing the adapted cells in the north-west corner (part of Death Row)*
- E9 Interior view of the New Division showing prison cells on the ground floor*



FREMANTLE PRISON CONSERVATION MANAGEMENT PLAN

4

February 2010

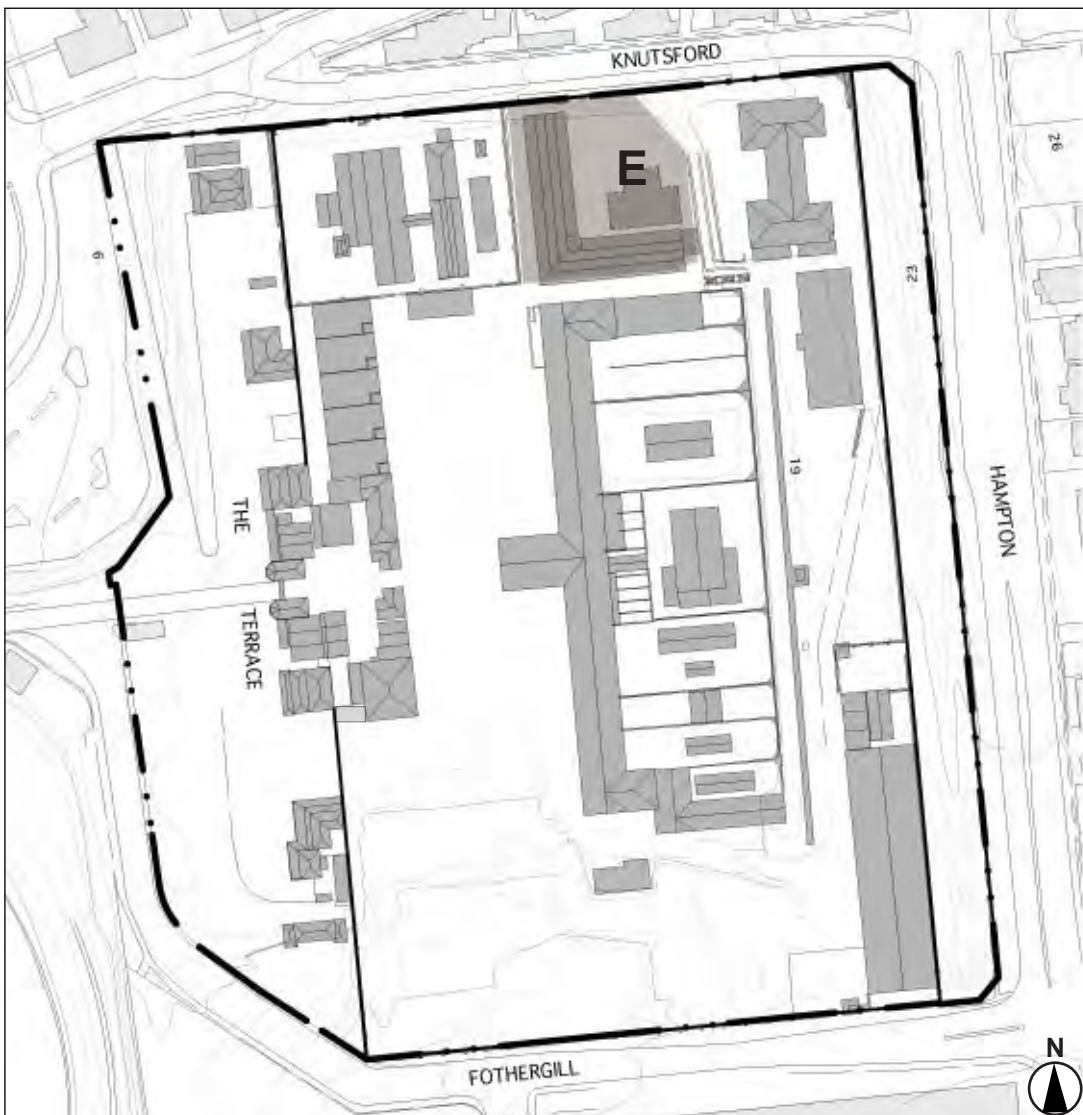


Figure 20. Zone E: New Division

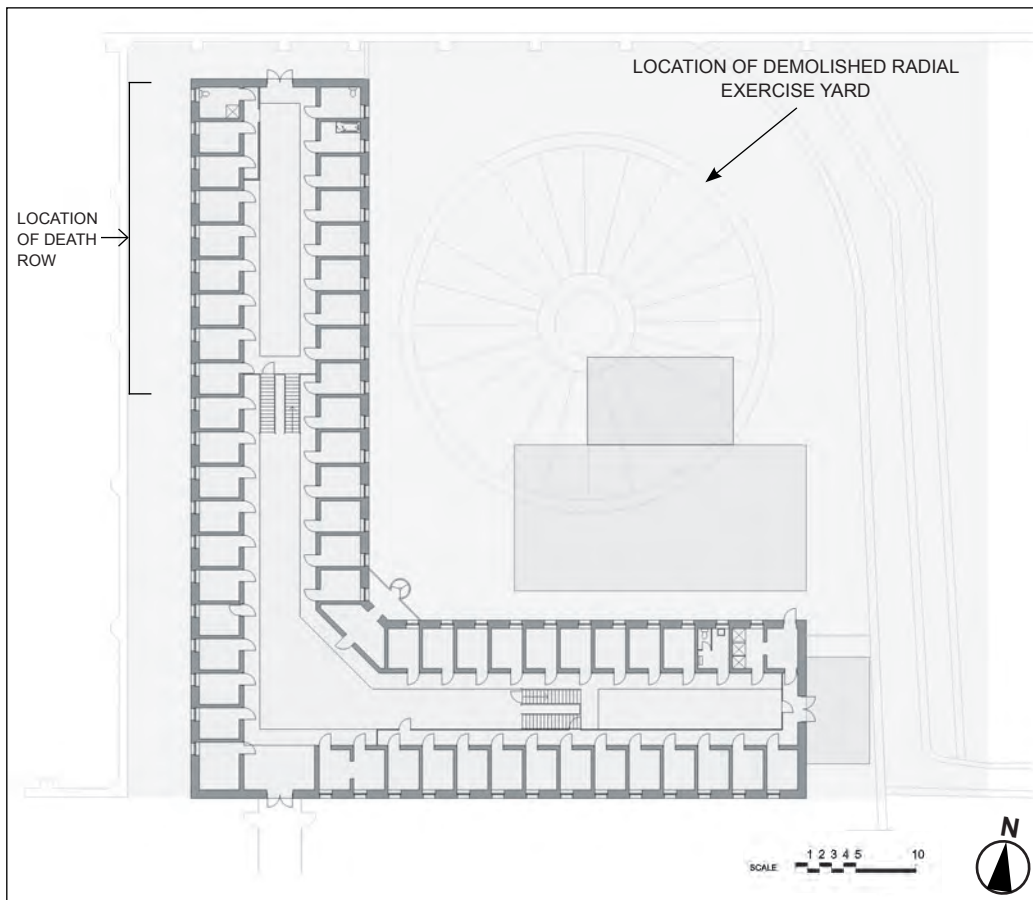


Figure 21a. Zone E Ground Floor Plan

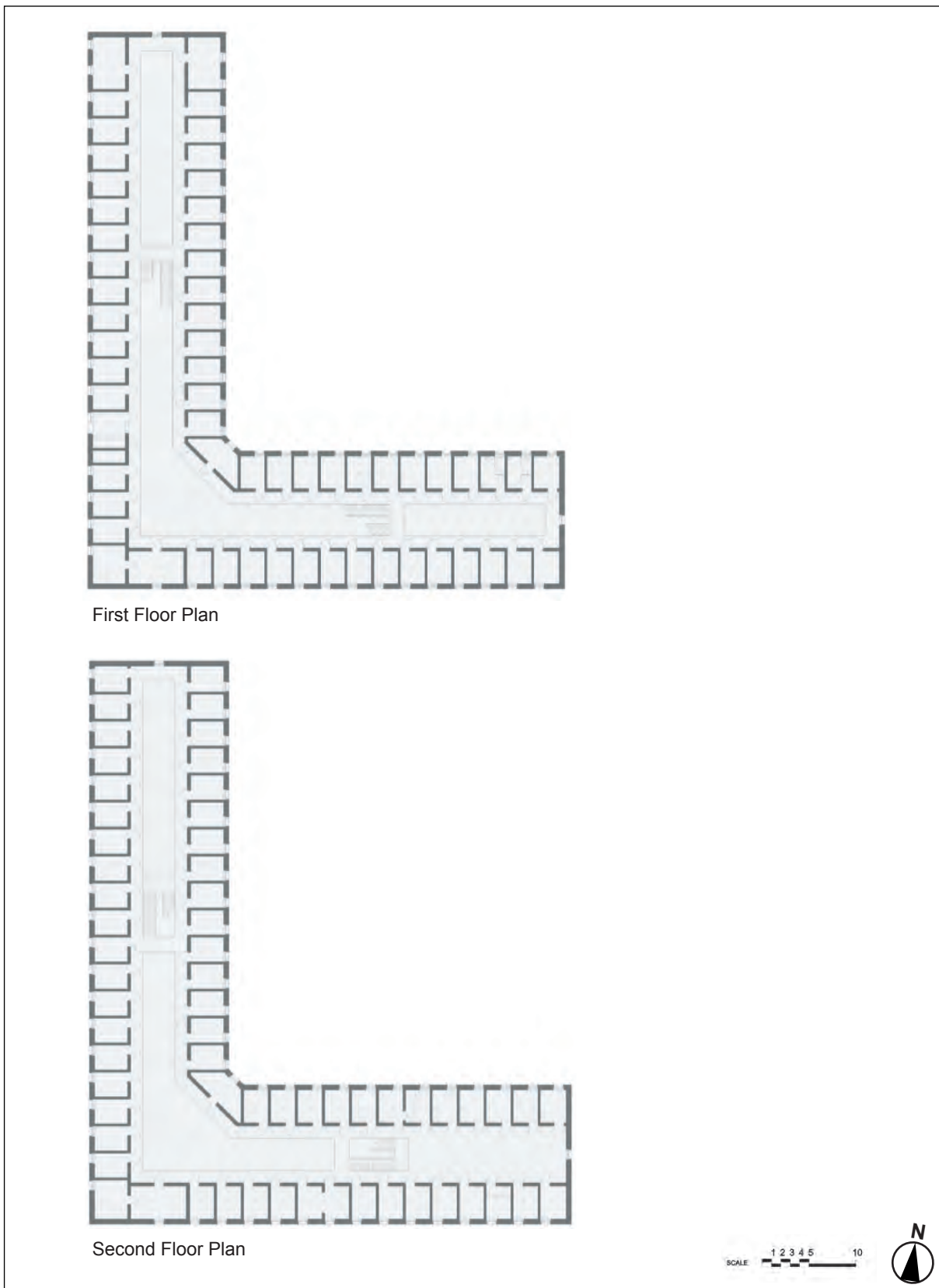


Figure 21b. Zone E Upper Floor Plans



Current Condition

Building Fabric

EXTERNAL

Roof	Corrugated galvanized iron
Walls	Rottnest Island ashlar limestone, limewash dado
Openings	Timber doors and frames, timber window frames with metal bars
Ground	Bitumen, generally high

INTERNAL

Ceilings	Ripple iron
Walls	Painted, bagged masonry
Floors	Concrete to ground floor, timber to upper floors
Staircases	Metal

Condition

Generally, New Division is in good condition.

Areas that require attention include:

- Some isolated failure of internal walls due to damp
- Localised low level failure of the external walls
- Cementitious pointing failing at low level, with some failure to arris' of stones
- Localised failure of the dado paint finish
- Deterioration of external joinery
- Deterioration of metal window bars

E10



E11



E12



E13



Photographic Views

E10	View looking south towards New Division
E11	Detail of failing mortar on north elevation
E12	Detail of damage to internal wall caused by damp
E13	Detail of former cell showing water damage to walls



ZONE F: Hospital

Location

The Hospital is located in the north-east corner of the site on an area of high ground which overlooks the Main Cell Block yards and New Division.

History

The hospital was built in 1857-59 and occupied until 1886 when the hospital function temporarily moved to the Main Cell Block. During this time the hospital building was used as a female prison and as a depot for invalids. From 1904 until 1991 the building was again used as a hospital. It is currently leased to the Fremantle Children's Literature Centre with accommodation for authors in residence.

Description

The building is H shaped in plan, single storey with rendered and painted limestone walls. It features a wide verandah with timber posts.

Current Use

It is being conserved and adapted for community and/or educational use and currently houses the Fremantle Children's Literature Centre.

Photographic Views

- F1 Aerial view of the Hospital, looking northeast from the Main Cell Block*
- F2 View of the Hospital, looking northeast*
- F3 View of the Hospital, looking north*
- F4 West elevation of the Hospital*
- F5 South elevation of the Hospital*
- F6 View of south-east corner of Hospital*



Figure 22. Zone F: Hospital



FREMANTLE PRISON
CONSERVATION MANAGEMENT PLAN

4

February 2010

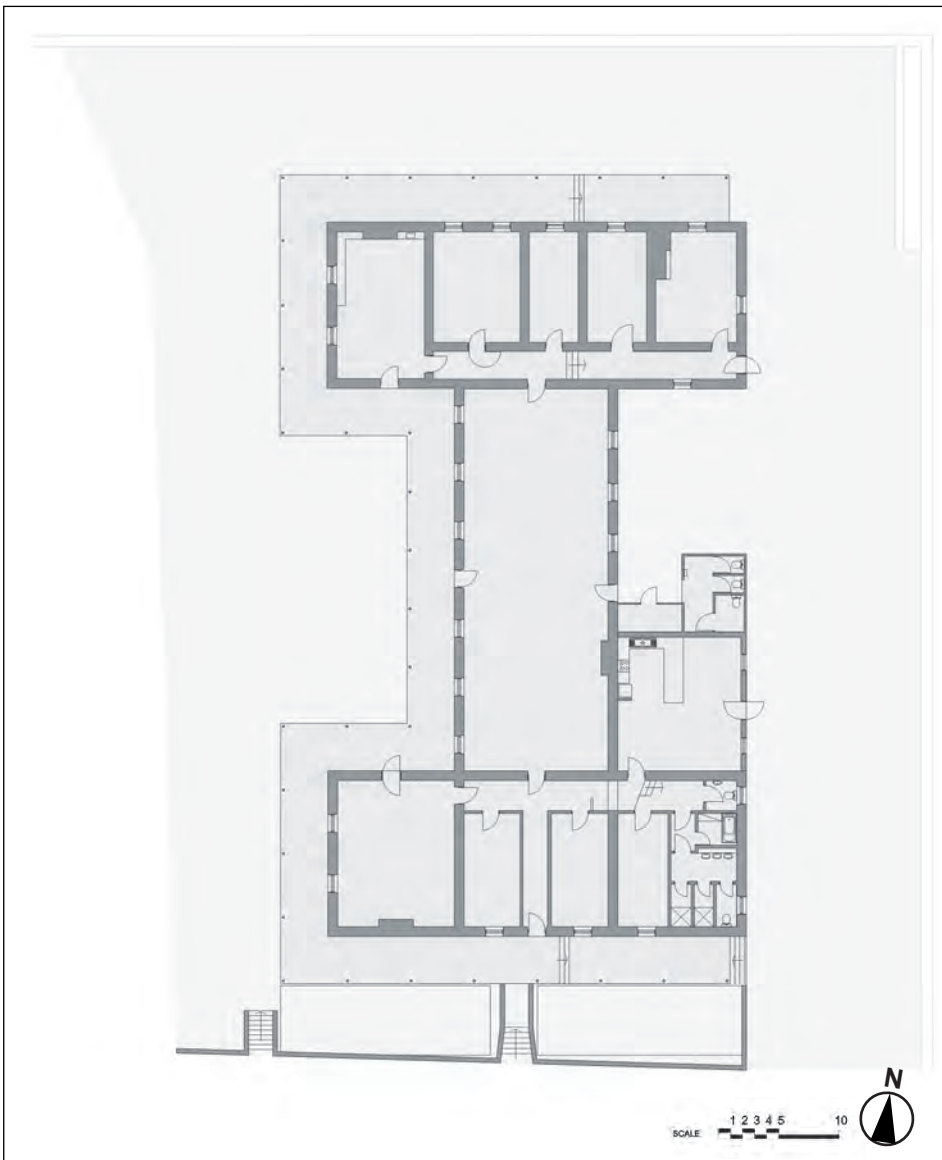


Figure 23. Zone F Floor Plan

ZONE F



Current Condition

Building Fabric

EXTERNAL

Roof	Corrugated galvanized iron
Walls	Rendered limestone, limewash to northern portion, acrylic and/or oil paint to southern portion
Openings	Timber doors and frames, timber double hung windows with metal bars
Ground	Ground level varies, generally building is elevated
Verandahs	Concrete

INTERNAL

Ceilings	Plaster
Walls	Painted and plastered
Floors	Timber, concrete, carpet laid over

Condition

Generally the Hospital is in fair condition.

Areas that require attention include:

- Some failure of the acrylic paint applied externally
- Some damage caused by damp internally, particularly at low level
- Some evidence of previous water damage to ceilings

F7



F8



F9



F10



F11



Photographic Views

F7	View looking south along western verandah
F8	View looking west along northern verandah
F9	Detail of paint failure on western wall
F10	Detail of damage caused by damp in corridor
F11	Detail of failure of wall in kitchen fireplace



ZONE G: Perimeter Walls

Location

This zone comprises the north, south, east and west perimeter walls.

History

The perimeter walls were built in the 1850s with the buttresses added in 1856 after a section of the wall collapsed during a 'whirlwind'. The walls were built with minimal excavation and hence define not only the extent of the depot but also the original topography (J.S. Kerr, 1998). An extra four courses of stone and coping were subsequently added along most of the walls in 1898.

Description

The walls are constructed from random rubble limestone and lime mortar and range in height from 1.2m to 5.0m. Attached piers occur at approximately 6.0 metre centres on the lee side of the walls. The perimeter walls accommodate a limited number of openings including both vehicular and pedestrian gates.

Current Use

These walls are being retained and conserved as the physical boundary and landmark identity of the site.

Photographic Views

- G1 *View of the perimeter wall on the southwestern corner*
- G2 *View of the southern perimeter wall along Fothergill Street, looking west*
- G3 *View of the perimeter wall inside the southwest corner*
- G4 *View of the perimeter wall along East Terrace, looking south*
- G5 *View of the eastern perimeter wall along Hampton Road Reserve, looking north*
- G6 *View of the eastern perimeter wall along Hampton Road Reserve, looking west*

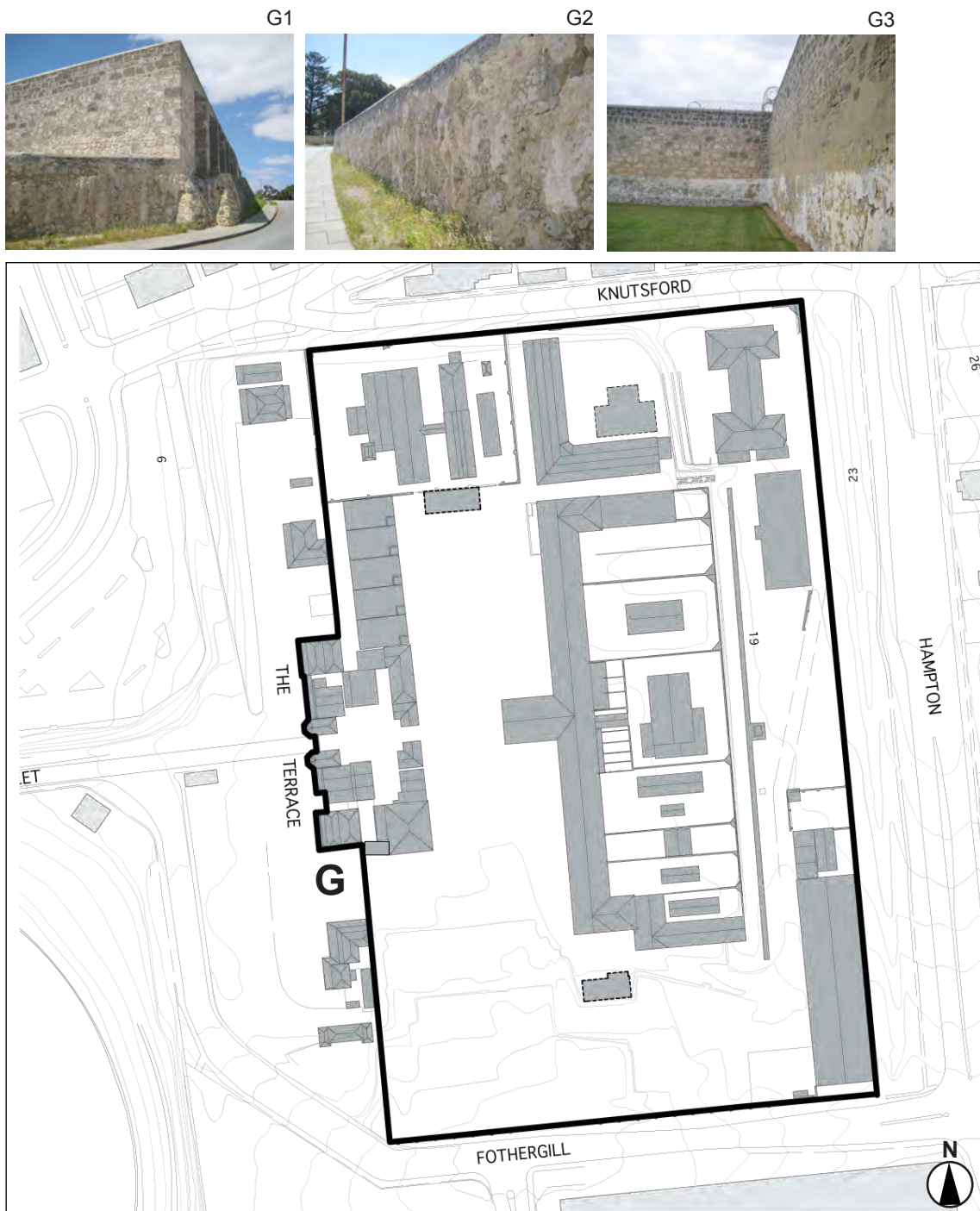


Figure 24. Zone G: Perimeter



FREMANTLE PRISON CONSERVATION MANAGEMENT PLAN

4

February 2010



Figure 25 : Zone G Plan (entry points indicated by arrows)

ZONE G



Current Condition

Building Fabric

EXTERNAL

Walls	Loosely coursed limestone rubble, wall height has been extended, multiple repairs evident
Ground	Variable, in part, natural fall of ground encourages water to accumulate at base of wall

Condition

Generally, the perimeter walls are in poor to fair condition.

Areas that require attention include:

- Some failure of the limestone
- Failure of applied renders and mortars
- Failure of embedded metal fixtures causing damage to walls
- Built up ground levels in part
- Growth of flora in and along base of walls and in fissures up the walls
- Areas of visually intrusive and damaging cement render

G7



G8



G9



G10



G11



G12



Photographic Views

- G7 View looking south along east face of eastern perimeter wall
- G8 Detail of south face of the northern perimeter wall showing growth of moss due to damp
- G9 Detail of watch tower in north-west corner
- G10 Detail of limestone failure
- G11 Detail of wall failure and previous repairs
- G12 Detail of failure caused by metal embedded in wall



ZONE H: Hampton Road Reserve

Location

This zone is located outside the eastern perimeter wall along its full length.

History

The northern part of the reserve contains parts of the foundations of three early (pre-WWI) cottages that had been built away from the wall so as to leave a buffer zone immediately outside the wall. A sand dyke was built along the reserve to discourage attempts to ram and breach the wall after the riots and fire of 1988. In 1992 the sand dyke was bulldozed, and in 1994 the strip of land between the eastern perimeter wall of the prison and Hampton Road (Reserve 28226) was added to the site reserve (24042).

Description

This strip of land is a gently sloping grassed area with a few trees planted along its length at irregular intervals. It is the primary vista of the site for visitors travelling along Hampton Road.

Current Use

Landscaped area.

Current Condition

Fabric

Ground Grassed verge falling from east to west

Condition

Generally, the landscaping is in good condition.

Photographic Views

- H1 *View of Hampton Road Reserve, looking north towards perimeter wall*
- H2 *View of Hampton Road Reserve, looking south towards perimeter wall*
- H3 *Detail view of Hampton Road Reserve, looking north*
- H4 *View of access doors to Pumping Station from Hampton Road Reserve*
- H5 *Detail of high level cracking and previous repairs*
- H6 *Detail of watch tower on top of north-east corner of the perimeter wall along Hampton Road Reserve*



Figure 26. Zone H: Hampton Road Reserve



ZONE I: East Reservoir & East Terrace

Location

The East Reservoir is located at the northern end of the East Terrace, which is situated inside the eastern perimeter wall with the East Workshops to the south, the Hospital to the north and the Main Cell Block exercise yards to the west.

History

In the 1890s a large brick vaulted reservoir was built as a boost to Fremantle's water supply in the north-east corner of the prison complex. The first half of the reservoir was completed in 1890 and the second, together with part of the reticulation system, about 1895. The Reservoir was built on the East Terrace, the highest part of the site. The centre of the terrace contains the sub surface remains of the oldest feature – the 1850s bath-house and well.

Description

The East Terrace comprises a large, open grassed area bisected diagonally by a bitumen road. A bitumen sealed footpath extends along the western edge. The East Reservoir appears as a low brick structure. Due to the slope of the ground the walls range between 150mm to 1.5m above ground level. The reservoir roof consists of five rendered brick vaults. Entry is through a door in a brick lobby approximately 1.2m below ground level at the western end of the central vault. Located to the south of the East Reservoir are the sub-surface remains of the bath-house (footings) and the top of a well.

Current Use

The East Reservoir is no longer used as a water storage facility and forms part of the interpretive tour at *Fremantle Prison*. The East Terrace provides vehicular and pedestrian access from the Fothergill Street gate to the Pumping Station and Hospital.



I 1



I 2



I 3

Photographic Views

- I 1 View of East Terrace, looking south
- I 2 View of Guardhouse on the East Terrace
- I 3 View of East Terrace, looking southwest towards the Main Cell Block
- I 4 Exterior view of East Reservoir, looking northeast
- I 5 Exterior view of East Reservoir, looking southwest, showing its roof
- I 6 Exterior view of East Reservoir, looking southeast
- I 7 Exterior view of East Reservoir, showing its entry on the west elevation
- I 8 Interior view of the East Reservoir on upper level
- I 9 Interior view of the East Reservoir showing lower level of the reservoir



Figure 27. Zone I: East Reservoir and East Terrace



Current Condition

Building Fabric

EXTERNAL

Roof	Concrete (to reservoir)
Walls	Brick
Openings	Lined timber door and frame
Ground	Entry below ground level, Terrace is grassed with bitumen pathways

INTERNAL

Ceiling	Brick walls
Walls	Brick
Floor	Concrete and, in part, exposed bed rock

Condition

Generally, the Reservoir is in fair condition.

Areas that require attention include:

- Failure of the roof drainage system
- Failure of brickwork internally and externally
- Corrosion of many internal metal elements
- Heavy salt deposits on the internal walls and floors
- Deterioration of external joinery

I10



I11



I12



I13



I14



Photographic Views

I10	View of interior of Reservoir
I11	View of interior of Reservoir
I12	Detail of salt efflorescence on bricks
I13	Detail of brick failure at entrance
I14	Detail of roof and failed rainwater goods



ZONE J: Pumping Station and Tunnels

Location

This zone is located adjacent to the East Terrace near the south-east corner of the site.

History

The tunnels and wells at *Fremantle Prison* supplied water to the Fremantle Convict Establishment (later prison) and the wider area of Fremantle and visiting ships. The wells were dug by convicts and the water was pumped initially by convicts and prisoners. The Pumping Station was completed in 1894. The associated tunnels, located twenty metres underground and over one kilometre in total length were cut out of the limestone by the prisoners during the 1890s.

Description

This zone includes the former Pumping Station adjacent to the East Workshops, the associated well and the connecting underground hydraulic network of tunnels. The Pumping Station is in a separate high walled compound with its own entry off Hampton Road and a pedestrian access to the East Reservoir. The tunnel network, which also includes series of shafts, drives and weirs, extends underneath parts of the East Terrace, Hampton Road, the Pumping Station and the East Workshops.

Current Use

It has been conserved, interpreted and adapted as a new underground adventure tourism and visitor experience.



Photographic Views

- J1 Interior view of the visitor centre adjacent to the Pumping Station
- J2 Interior view of the Pumping Station
- J3 External view of the west elevation of Pumping Station from the southwest
- J4 View of the northern courtyard side of the Pumping Station, looking south
- J5 View of the northern courtyard side of the Pumping Station, looking east
- J6 Interior view of the visitor entry to the Tunnels
- J7 Detail view of metal walkway and revealed footings of an early pump
- J8 Detail view of the access ladders to the Tunnels



FREMANTLE PRISON CONSERVATION MANAGEMENT PLAN

4

February 2010

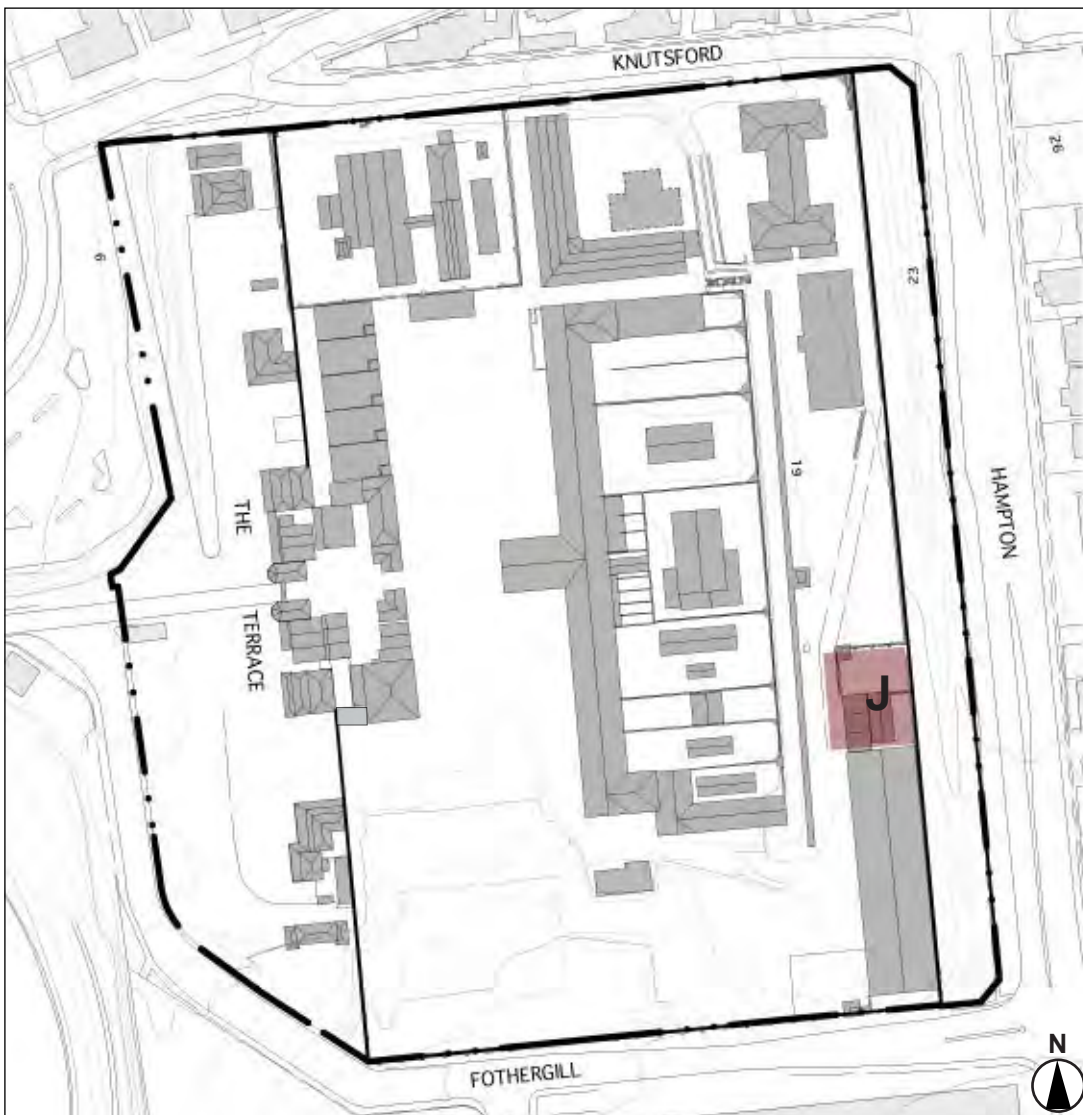


Figure 28. Zone J: Pumping Station and Tunnels

ZONE J

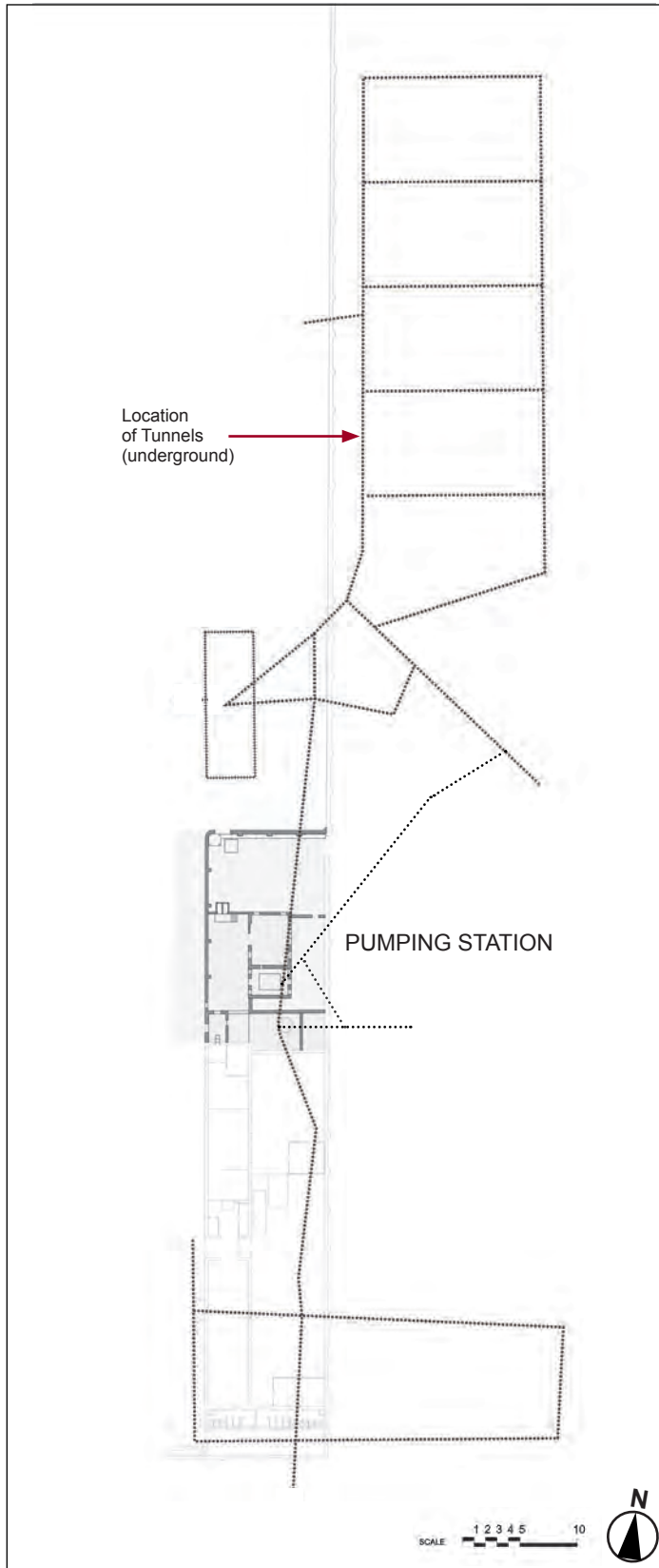


Figure 29. Zone J Plan

J6



J7



J8





Current Condition

Building Fabric

EXTERNAL

- Roof Corrugated galvanized iron
- Walls Limestone, brick, rendered and limewashed in parts.
Some decorative renderwork to quoining and parapets

Openings Metal gates

Ground Grass and bitumen close to floor level

INTERNAL

- Ceiling Tunnels are hewn through limestone
- Walls Limestone
- Floor Limestone

Condition

Internally, the tunnels complex has been subject to major conservation works, including a visitor centre, interpretation and is in good condition.

Areas that require attention include:

- External limewash in poor condition, rear areas are particularly poor
- Multiple earlier repairs
- Deteriorating dado

J9



J10



J11



Photographic Views

J9 View through to rear of Pumping Station showing low level masonry deterioration, and earlier repairs

J10 View of north facade of Pumping Station, note early infill work

J11 Detail showing decorative render quoining and multiple repairs



ZONE K: East Workshops

Location

The East Workshops are located in the south-east corner of the site, adjacent to the East Terrace.

History

The East Workshops are on the site of one of the first structures to be erected, the original Blacksmiths' shop, built in 1852. By 1858 the carpenters' shop had been transferred to the site and both shops built or rebuilt in limestone within a new yard set against the perimeter wall. The masonry of both shops survives today. Since 1960 the entire yard has been roofed using a light steel truss on steel supports and the large space created was last used as a metal and automotive workshop (J.S. Kerr, 1998). The workshops were introduced to provide activity for the inmates, reduce the running costs of the prison by providing the resources to carry out many repairs and building needs, and to provide a training ground for unskilled labour.

Description

The East Workshops comprises a single storey limestone building to the west elevation and an enclosed area to the east abutting the perimeter wall.

Current Use

The East Workshops are currently used for general and curatorial storage and for model railway enthusiasts displays. The intention is to conserve and adapt them for use as a centre for arts, crafts and traditional trades.



Photographic Views

- K1 Exterior view of the East Workshops, looking northeast
 K2 View of access to East Workshops at the southern end
 K3 Interior view of the East Workshops, looking south



FREMANTLE PRISON CONSERVATION MANAGEMENT PLAN

4

February 2010



Figure 30. Zone K: East Workshops

ZONE K

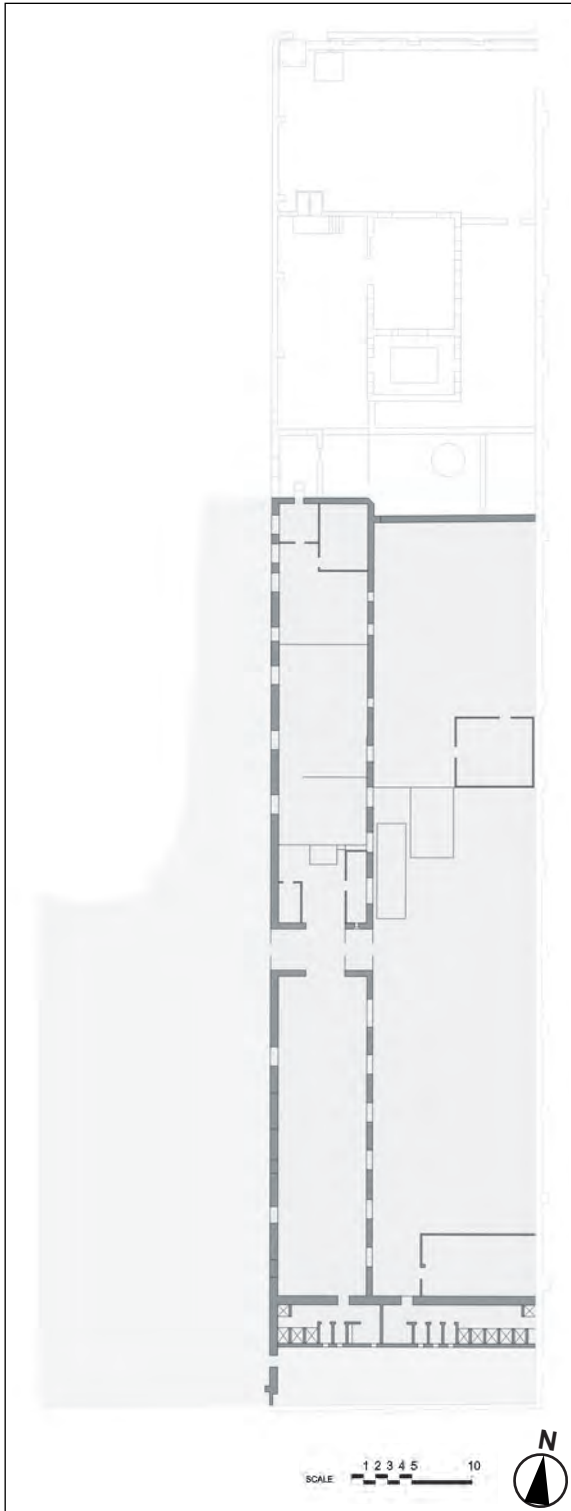


Figure 31. Zone K Floor Plan



Current Condition

Building Fabric

EXTERNAL

- Roof Fibre cement sheet
- Walls Coursed limestone with cement render at low level; some recent brick extensions; some early cement render finishes including decorative quoining
- Openings Metal entry doors and gates, timber window frames, some recent louvres, with metal bars

Ground Bitumen, at or close to floor levels

INTERNAL

- Ceiling Metal deck roof supported on metal trusses
- Walls Limestone, brick
- Floors Concrete
- Openings Metal entry doors and gates, timber window frames, some recent louvres, with metal bars

Condition

Generally, the East Workshop is in fair to poor condition.

Areas that require attention include:

- Failure of the limestone walls
- Previous poor repairs
- Deterioration of external joinery
- Deterioration of exposed metalwork



Photographic Views

- K5 View of the southwestern corner of the south perimeter wall forming the external wall of the East Workshops
- K6 Detail of window showing deterioration of joinery and metal bars
- K7 View of interior of west wall of East Workshops
- K8 View showing damage to internal wall
- K9 Detail showing deterioration of floor
- K10 View showing damage to internal wall



ZONE L: Southern End of Main Cell Block

Location

The former kitchen and related facilities are housed at the southernmost end of the Main Cell Block at ground floor level. This zone also includes the 1 and 2 Division Yards.

History

Originally designed as Association Wards, the wings flanking either end of the Main Cell Block did not remain long in their 1850s use. The lower southern ward became the cookhouse and during the twentieth century progressive development and numerous extensions transformed it into a modest but modern catering facility.

Description

These facilities are housed in a limestone and brick extension to the Main Cell Block and extend to the east as far as the eastern extent of the exercise yards where two boilers with a common brick chimney are found. The main walls of the kitchen area are constructed of limestone.

Current Use

Currently vacant.

Photographic Views

- L1 *View of the southern end of the Main Cell Block from the East Terrace showing the roof of the kitchen area*
- L2 *View of the southern end of the Main Cell Block from the East Terrace showing 1 and 2 Division Yards*
- L3 *View of 1 Division Yard (South), looking east*
- L4 *View of the Kitchen and Boiler House from the southwest*
- L5 *View of the Boiler chimney stack, looking west from the East Terrace*
- L6 *View of northern wall of 2 Division Yard*
- L7 *View of shelter in 2 Division Yard*
- L8 *View of caged entry to 1 Division Yard (North)*



FREMANTLE PRISON CONSERVATION MANAGEMENT PLAN

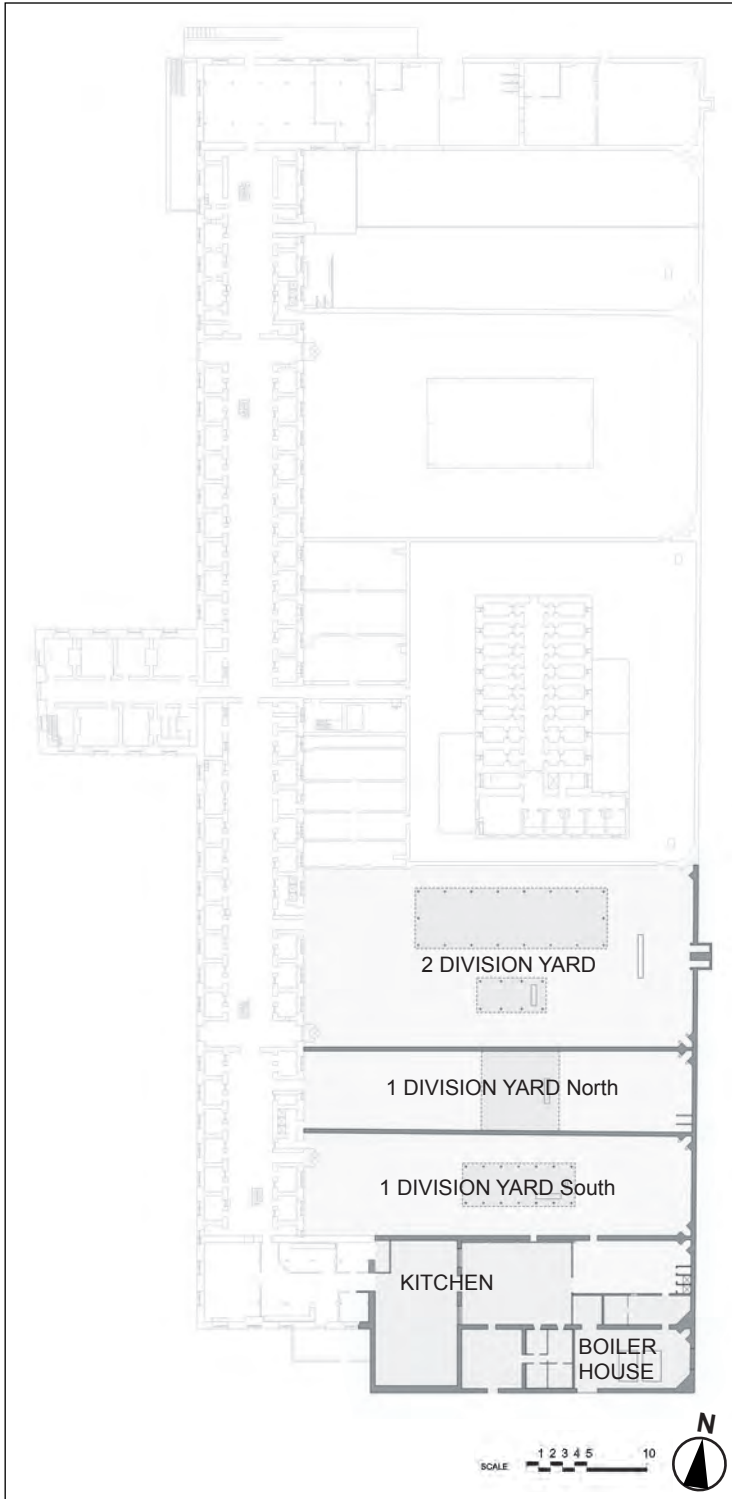
4

February 2010



Figure 32. Zone L: Southern End of Main Cell Block

ZONE L



L4



L5



L6



L7



L8



Figure 33. Zone L Floor Plan



Current Condition

Southern End of Main Cell Block: Building Fabric

EXTERNAL

Roof Corrugated pre-finished iron. Galvanized corrugated iron in shelter shed

Walls Coursed limestone, metal framed shelter

Openings Jarrah frames, with cast iron windows and cast iron window bars

Ground Bitumen, at or close to floor level

INTERNAL

Ceilings Suspended flush ceilings to kitchen

Walls Painted masonry, tiled in kitchen areas

Floors Concrete, ceramic tiles

Openings Jarrah frames, with cast iron windows and cast iron window bars

Southern End of Main Cell Block: General Condition

The western elevation has recently been fully conserved and is in very good condition. Generally, the Southern End of Main Cell Block, and east elevation, is in poor to fair condition.

Areas that require attention include:

- Failure of the limestone walls
- Previous inappropriate repairs to the walls
- Deterioration of joinery and metalwork elements
- Extensive deterioration of the shelter structure and its cladding
- Damage caused by damp to internal walls
- Damage caused by damp to ceilings
- Deterioration of floor surfaces
- Brickwork to boiler chimney in poor condition

Photographic Views

L9 View of the Kitchen attached to the southern end of the Main Cell Block, looking east

L10 View of the Boiler chimney looking west from the East Terrace

L11 Detail view of the Boiler Chimney showing deterioration to the brickwork

L12 Internal view of the Boiler House

L13 Internal view of Kitchen

L14 Internal view showing damage to walls in Kitchen Store

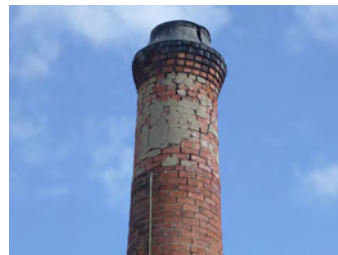
L9



L10



L11



L12



L13



L14





1 Division Yard: Building Fabric

EXTERNAL

Roof Corrugated iron

Walls Coursed limestone. Metal framed shelter shed

Ground Bitumen, at floor level of Main Cell Block

1 Division Yard: Condition

Generally, 1 Division Yard is in poor to fair condition.

Areas that require attention include:

- Failure of the limestone walls and dado finishes
- Previous inappropriate repairs to the walls
- The external toilets and other water services have been capped with concrete. Doors and screens have not been maintained

L15



L16



L17



L18



L19



L20



Photographic Views

L15 View looking east across 1 Division Yard (North)

L16 Detail view of 1 Division Yard (North) showing low level failure

L17 View looking east across 1 Division Yard (South)

L18 View of southern wall of 1 Division Yard (South) showing previous repairs and infill of opening

L19 Detail of metal shelter 1 Division Yard (South) showing rust

L20 Detail of wall to Main Cell Block in 1 Division Yard (South) showing previous repairs to dado



2 Division Yard: Building Fabric

EXTERNAL

Roof Metal deck on shelter shed

Walls Coursed limestone. Metal framed shelter shed

Openings N/A

Ground Bitumen, at floor level of Main Cell Block

2 Division Yard: Condition

Generally, the 2 Division Yard is in poor to fair condition.

Areas that require attention include:

- Failure of the limestone walls and dado finishes
- Previous inappropriate repairs to the walls
- Deterioration of the metal shelter structure
- The external toilets and other water services have been capped with concrete, and doors and screens have not been maintained

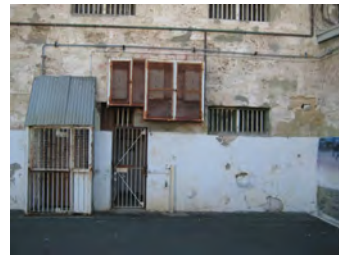
L21



L22



L23



Photographic Views

L21 View looking west across 2 Division Yard to shelters

L22 View looking east across 2 Division Yard to toilets and services on east wall

L23 Detail showing previous repairs to wall



ZONE M: Development Zone

Location

This zone is located at the southernmost end of the site directly south of the Main Cell Block.

History

Edmund Henderson left substantial zones for future development to the north and south of Main Cell Block, these zones came to accommodate a number of temporary new buildings. With the exception of some terrace walling, all the visible structures within this area are of recent erection, modest significance, and are the last of a series that have come and gone since World War I. A brick shower block was erected south of the Main Cell Block in the 1980s.

Description

This zone comprises three terrace levels with the Shower Block on the lower level, sheds on the middle level and the eastern end of the terraced South Knoll on the top level.

Current Use

Storage and maintenance.

Photographic Views

- M1 View looking north from the upper terrace of the Development Zone*
- M2 View looking northeast across the sheds on the middle terrace of the Development Zone*
- M3 View looking west towards sheds on the middle terrace of the Development Zone*



FREMANTLE PRISON CONSERVATION MANAGEMENT PLAN

4

February 2010

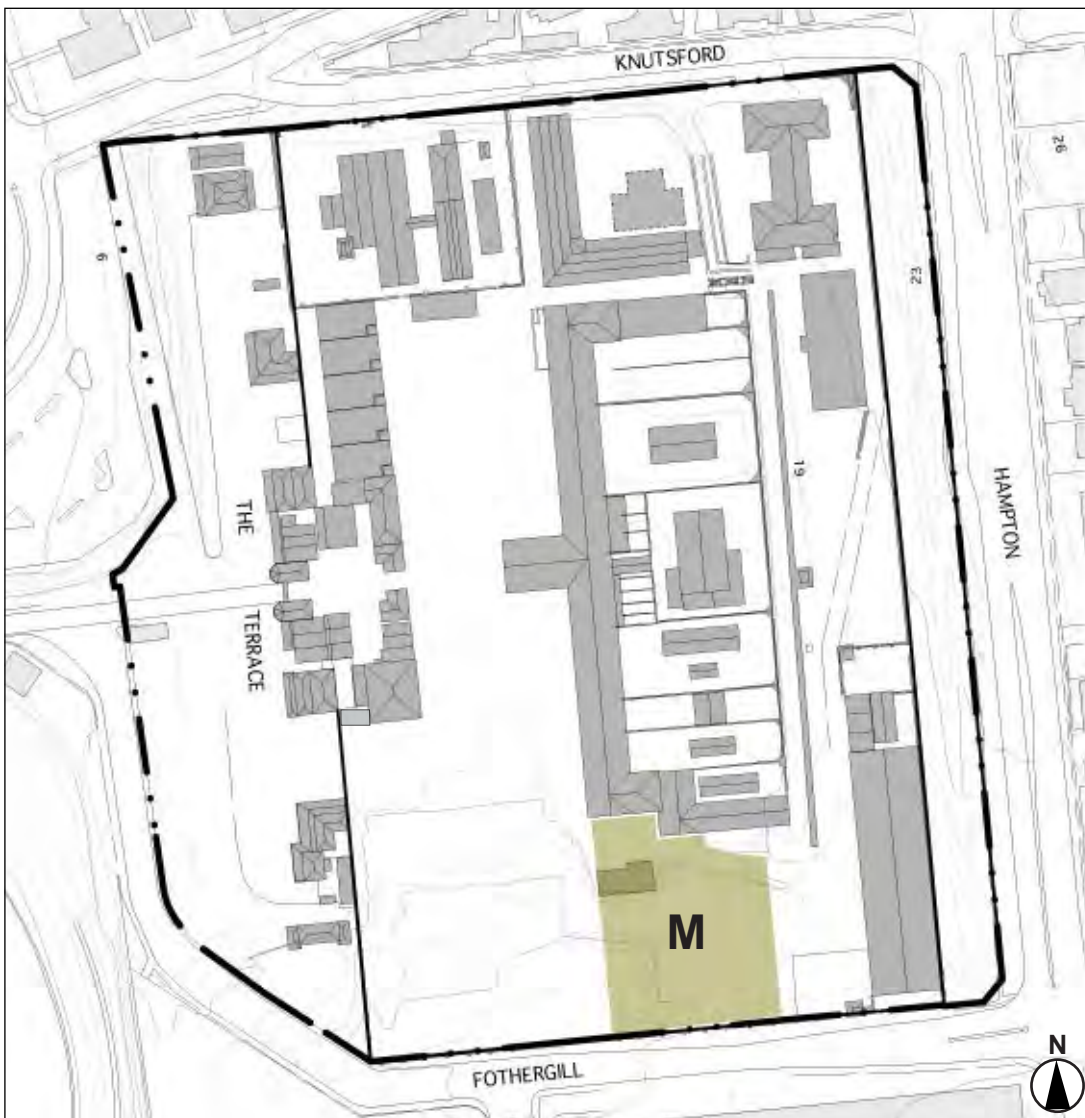


Figure 34. Zone M: Development Zone



Current Condition

Building Fabric

EXTERNAL

Roof	Corrugated galvanized iron, asbestos sheets
Walls	Corrugated galvanized iron, timber framed, brick
Openings	Metal framed windows, timber framed doors, timber windows with metal mesh
Ground	Bitumen, concrete, at floor level

Condition

Generally, the Shower Block, Workshops and Sheds are in fair condition.

Areas that require attention include:

- Deterioration of rain water goods
- Deterioration of metal fascia of workshop
- Some render failure
- Asbestos roof and trim
- General debris and uneven surfaces representing trip hazard in parts

M4



M5



M6



M7



Photographic Views

M4	Detail view of the sheds showing deterioration of rainwater goods
M5	View looking south towards sheds showing uneven surfaces
M6	View looking north towards sheds showing uneven surfaces
M7	View looking west across the Shower Block showing asbestos roof



ZONE N: South Knoll

Location

The South Knoll is located in the southwest corner of the site to the south of the Forecourt.

History

In 1852 Edmund Henderson reduced the proposed area to be enclosed by the perimeter wall. The south wall of his revised perimeter mounted the northern spur of Church Hill. The crest of the hill lay to the south of the wall and is now entirely cut away for development. Only the wall with its familiar hump-back profile defines the original contours. Within in the prison the northern spur was progressively cut back and, at least by 1896, terraced.

Description

The South Knoll still approximates its original landform, even if reduced and terraced. It comprises the remains of the high, natural ground level, which has been terraced to form flat, grassed areas. Playing fields and courts are still in evidence. There is a brick-vaulted reservoir located under the Knoll.

Current Use

Vacant.

Current Condition

Fabric

Walls	Brick retaining walls, painted
Floor	Concrete paving, remnant brick footings
Ground	Grass and former garden beds

Condition

The South Knoll is generally in good condition.

Areas that require attention include:

- Deteriorating chain mesh fences
- Deteriorating paint finishes
- Untended garden beds
- Frequent trip hazards

Photographic Views

N1	<i>View of perimeter wall along South Knoll</i>
N2	<i>View of South Knoll, looking west</i>
N3	<i>View looking north-east across South Knoll towards Main Cell Block</i>

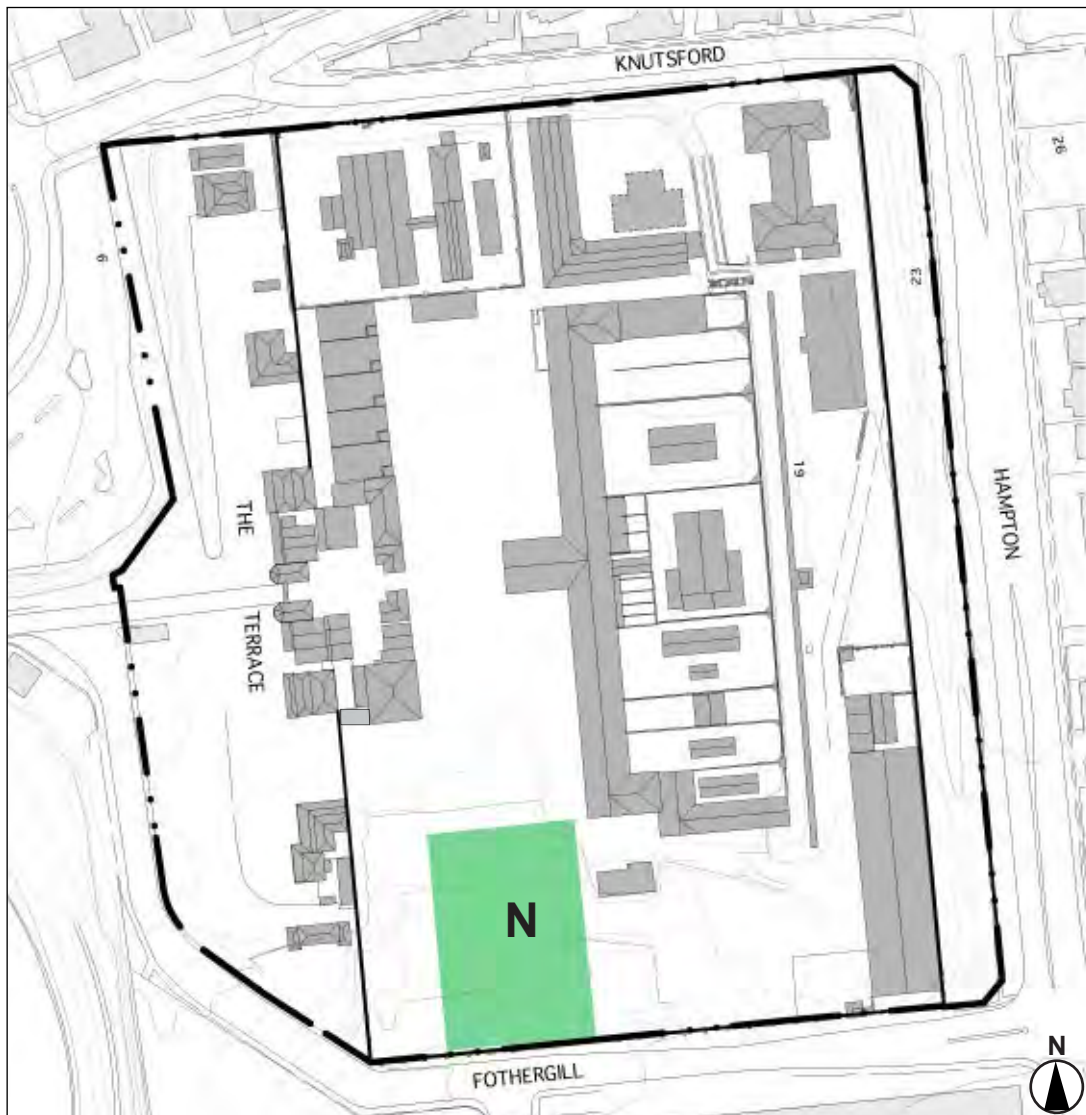


Figure 35. Zone N: South Knoll



ZONE P: Development Zone

Location

This zone is located in the south-west corner of the prison complex, at the western end of the South Knoll and to the south of the Gatehouse and Entry Complex.

History

This area was the site of temporary barracks during the construction of *Fremantle Prison* during the early 1850s, it has remained undeveloped since that time. Arguably Edmund Henderson had envisaged the development of this area to create a more or less symmetrical configuration of the prison.

Description

It comprises open grassed and bituminous areas, similar in character to the Forecourt of the Main Cell Block as well as grassed terraces.

Current Use

Vacant. It has been identified as a site for possible future development.

Current Condition

Fabric

Walls Random rubble limestone, forming the east walls to Nos. 16 & 18 the Terrace; enclosing metal frame, mesh and razor wire fences.

Ground Grass, elevated at southern end

General Condition

This area is in a fair to good condition. However the ground level in this zone is significantly higher in part than the floor level of the adjacent No. 18 The Terrace contributing to the damp issues in the building.

Photographic Views

- P1 View of Development Zone, looking southwest
- P2 View of Development Zone, looking north
- P3 View of Development Zone, looking south
- P4 View of bituminous area
- P5 View of western perimeter wall
- P6 View looking towards the eastern wall of No. 18 The Terrace

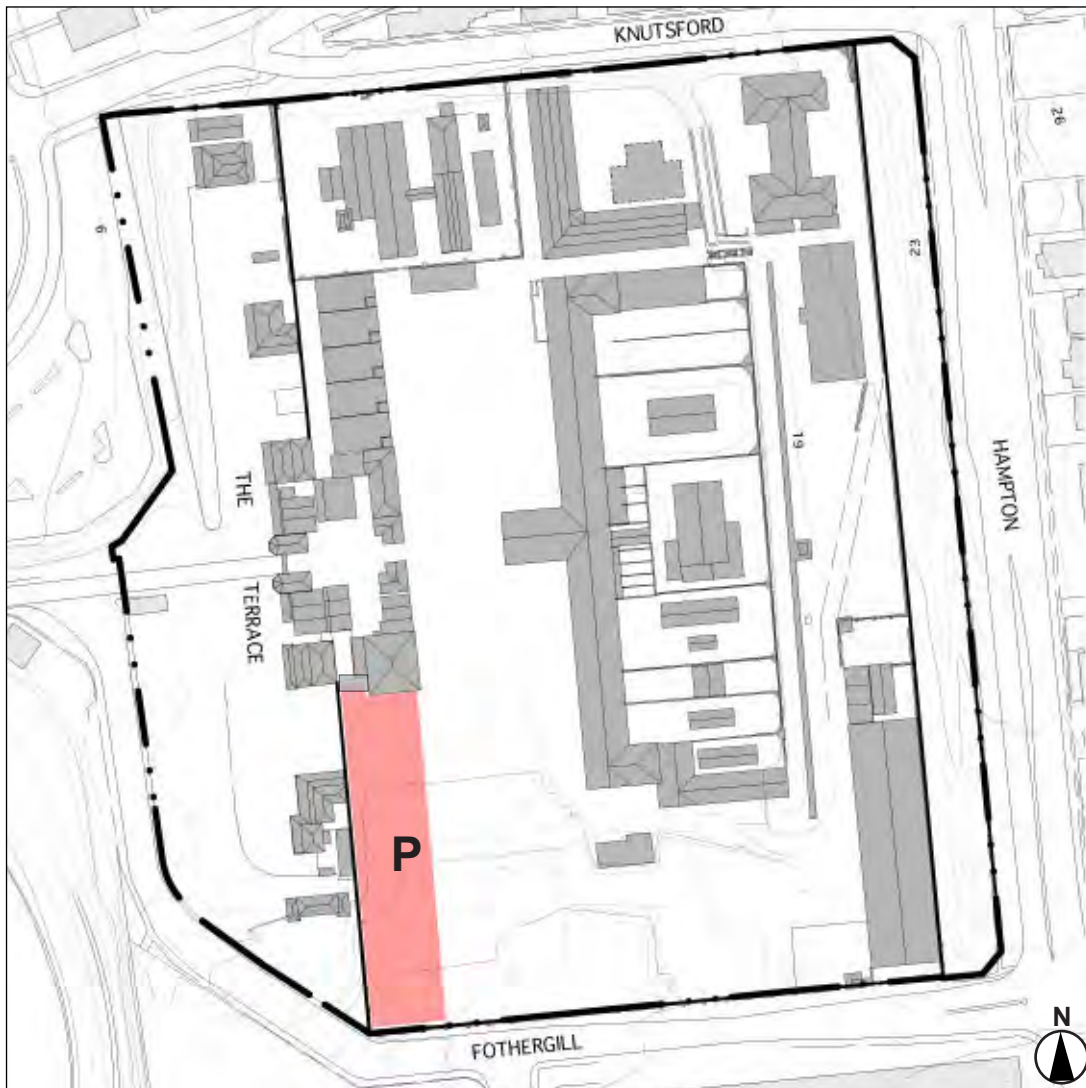


Figure 36. Zone P: Development Zone



ZONE Q: The Terrace

Location

The Terrace forms the public frontage of *Fremantle Prison*. Built on the escarpment overlooking Fremantle to the west.

History

The Terrace houses are constructed adjoining the western perimeter wall of *Fremantle Prison* and were built as residences for senior officers of the Fremantle Convict Establishment and their families, being larger and more refined than the Warder's Cottages built on Henderson Street below.

No.2 was completed in 1857 as a 'Guard Room' to accommodate 19 men. In the 1890s, the Guard Room was converted to quarters and Nos. 4 & 6 were built alongside as a duplex. In the late twentieth century all three residences were disfigured by façade additions, however by 1994 these additions were removed and the buildings returned to use as rental accommodation.

The residences Nos. 8 & 18 were built during the 1850s campaigns for officers associated with the Fremantle Convict Establishment. No. 18 was extended in 1893 and then altered again early in the twentieth century. In 1998 it was renovated and adapted for re-use as an office. No.8 was converted to staff club use in the last years of the prison, since the prison was disestablished the building has been repaired and modestly adapted to office use.

Description

The Terrace comprises a broad street with buildings to its eastern side behind fenced gardens. The Fairbairn Street Ramp extends directly westwards from the centre of The Terrace opposite the Gatehouse. Car park facilities are located just south of the axial approach to the Gatehouse. The Holdsworth Street ramp is located parallel to The Terrace at the northern end.

No. 2 The Terrace is a single storey house with random rubble limestone walls and corrugated iron roof separated from the perimeter wall by a rear yard. No. 4 and 6 The Terrace are a pair of single storey duplex units with walls constructed of random rubble limestone, corrugated iron roofs and front verandahs, separated from the perimeter wall by a rear yard.

No. 8 The Terrace (also known as the Chaplain's House) is a two-storey house with rendered and painted limestone walls. The plan is roughly square with verandas and balconies along the west and south sides. This building has a small roofed area at the rear connecting to the main prison wall.

No. 12 & 14 The Terrace (See the Gatehouse and Entry Complex, Zone A)

No. 10 & 16 The Terrace (See the Gatehouse and Entry Complex, Zone A)

No. 18 The Terrace is a two storey structure (also known as the Surgeon's House) with limestone walls. There is a two storey timber verandah on the northern and western sides. A single storey building connects the south-east side of the house to the main prison wall. A single storey limestone structure (former Stables) is located to the south of No 18.

Current Use

The Terrace buildings are used for short-stay tourist accommodation and offices.



Figure 37. Zone Q: The Terrace



FREMANTLE PRISON CONSERVATION MANAGEMENT PLAN

4

February 2010



Photographics Views

- Q1 View of the No. 2 The Terrace, looking northeast
- Q2 View of No. 4 & No. 6 The Terrace, looking east
- Q3 View of No. 8 The Terrace, looking northeast
- Q4 View of No.18 The Terrace, looking southeast
- Q5 View of No.18 The Terrace, looking northwest
- Q6 View of the Stables, No.18 The Terrace, looking southeast

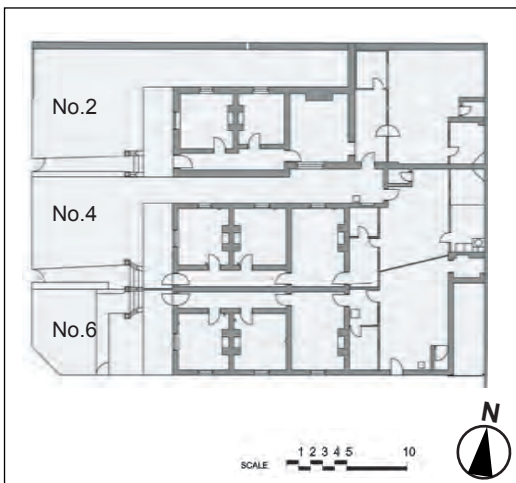


Figure 37a. Zone Q Nos. 2, 4 & 6 The Terrace Floor Plans

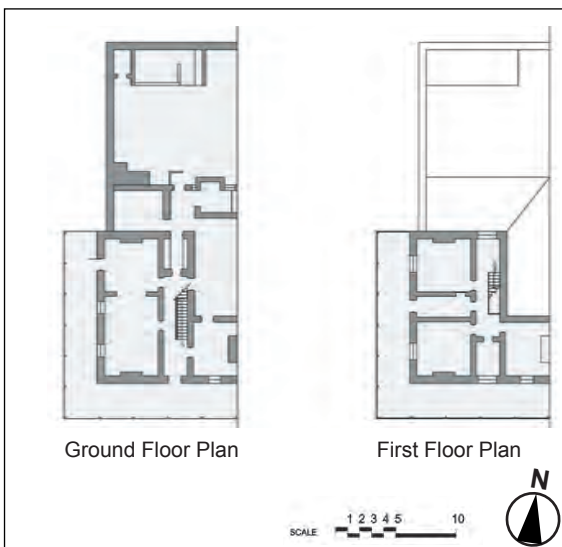


Figure 37b. Zone Q No. 8 Floor Plans

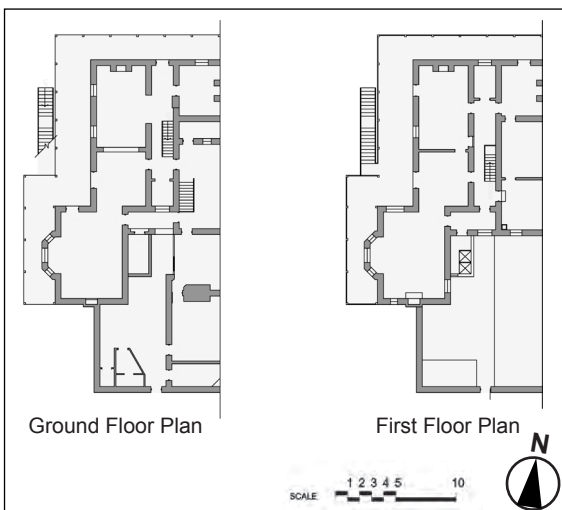


Figure 37c. Zone Q No. 18 Floor Plans



Current Condition

No. 2 The Terrace: Building Fabric

EXTERNAL

Roof	Corrugated galvanized iron
Walls	Limestone rubble, rendered and painted on front façade
Openings	Panelled timber doors, timber double hung windows, eight pane timber casement windows
Verandah	Corrugated galvanized iron roof, timber board floor
Ground	Cement paving, rises to rear of cottage

INTERNAL

Ceilings	Lath on plaster, plasterboard at rear
Walls	Plastered and painted masonry, plasterboard clad framed construction at rear
Floors	Timber boards, concrete under carpet and tiles at rear
Openings	Timber panelled doors, two pane timber double hung windows, eight pane timber casement windows
Joinery	Skirting boards, fire surrounds

EXTERNAL FACILITIES

A toilet and laundry are located in separate buildings in the rear courtyard

Roof	Corrugated galvanized iron
Walls	Limestone and brick
Floors	concrete
Openings	Timber lined doors, timber framed louvre windows

Q7



Q8



Q9



Q10



Photographic Views

Q7	View looking east towards No. 2 The Terrace
Q8	Detail of failed render on north elevation
Q9	Detail of failed limestone on north elevation
Q10	View looking north across front verandah



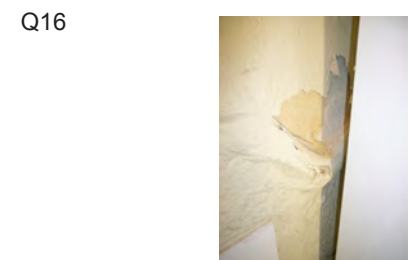
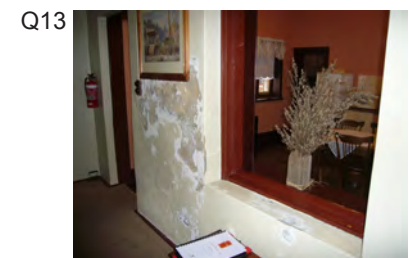
Ground Paving, garden beds adjacent to rear wall and toilet wall

No. 2 The Terrace: Condition

Generally, No. 2 The Terrace is in good condition, however, the external facilities are in poor condition.

Areas that require attention include:

- Some failure of the painted render
- Low level failure of the northern limestone wall extending the length of the wall
- Damaged light fitting above front entry door
- Weathering of exposed timber floorboards on verandah
- Failure of roof sheeting
- Some cracking of the lath on plaster ceilings
- Some cracking of internal walls
- Extensive damage caused by damp to the western and southern walls of the rear room
- Damage caused by damp to the western wall of the bathroom
- Deterioration of painted timber surfaces, particularly the windows and frames
- Damage to some timber window frames
- Damage caused by damp to the interior and exterior of the laundry walls
- Damage caused by damp to the interior and exterior of the toilet walls
- Corrosion of an embedded metal wall vent in the northern wall of the toilet



Photographic Views

- Q11 Detail of damage to wall in front room
 Q12 Detail of deterioration of window cill in kitchen
 Q13 Detail of damage to western wall in rear room
 Q14 Detail of corrosion of embedded metal vent in toilet
 Q15 View looking south-west towards rear of No. 2 The Terrace
 Q16 Detail of damage caused by damp to laundry



No. 4 The Terrace: Building Fabric

EXTERNAL

- Roof Corrugated galvanized iron
- Walls Limestone rubble, rendered and painted quoining and architraves
- Openings Lined timber doors, timber double hung windows
- Verandah Corrugated galvanized iron roof, timber board floor
- Ground Grass, concrete paving, rises to rear of cottage

INTERNAL

- Ceilings Lath on plaster, plasterboard at rear
- Walls Plastered and painted masonry, plasterboard clad framed construction at rear
- Floors Timber boards, concrete under carpet and tiles at rear
- Openings Timber panelled doors, two pane timber double hung windows
- Joinery Skirting boards, fire surrounds

EXTERNAL FACILITIES

In the rear courtyard, in separate buildings, there is an external toilet, and a laundry which is shared with No. 6 The Terrace.

- Roof Corrugated galvanized iron
- Walls Solid masonry: limestone and brick
- Floors Concrete
- Openings Timber lined doors
- Ground Paving, garden beds adjacent to rear wall and laundry walls

Q17



Q18



Q19



Photographic Views

Q17 View east towards No. 4 The Terrace

Q18 View looking south across verandah

Q19 Detail of corrosion of roof sheeting



No. 4 The Terrace: Condition

Generally, No. 4 The Terrace is in good condition, however the external facilities are in poor condition.

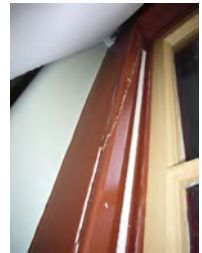
Areas that require attention include:

- Some failure of the painted render
- Weathering of exposed timber floorboards on verandah
- Some cracking of the plaster on lath ceilings
- Water damage to the ceiling of the hallway
- Deterioration of painted timber surfaces, particularly the windows and frames
- Damage to some window frames
- Cracking of some internal walls
- Damage caused by damp to the western wall of the rear room
- Damage caused by damp to the western wall of the bathroom
- Damage caused by damp to the exterior and interior of the toilet walls
- Damage caused by damp to the exterior and interior of the laundry walls

Q20



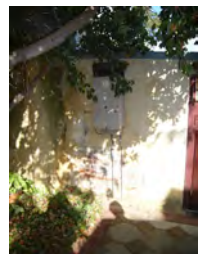
Q21



Q22



Q23



Photographic Views

- Q20 *Detail of damage to wall in rear room*
- Q21 *Detail of damage to window frame in front bedroom*
- Q22 *View across laundry showing damage caused by damp*
- Q23 *View looking south showing garden beds adjacent to toilet*



No. 6 The Terrace: Building Fabric

EXTERNAL

- Roof Corrugated galvanized iron
- Walls Limestone rubble, rendered and painted quoining and architraves
- Openings Lined timber door, timber double hung windows
- Verandah Corrugated galvanized iron roof, timber board floor
- Ground Concrete, bitumen, rises to rear of cottage

INTERNAL

- Ceilings Lath on plaster, plasterboard at rear
- Walls Plastered and painted masonry, plasterboard clad framed construction at rear
- Floors Timber boards, concrete under carpet and tiles at rear
- Openings Timber panelled doors, two pane timber double hung windows, eight pane timber casement windows
- Joinery Skirting boards, fire surrounds

EXTERNAL FACILITIES

In the rear courtyard, in separate buildings, there is an external toilet, and a laundry, which is shared with No. 4 The Terrace.

- Roof Corrugated galvanized iron
- Walls Solid masonry: limestone and brick
- Floors Concrete
- Openings Timber framed doors
- Ground Paving, garden beds adjacent to rear walls

Q24



Q25



Q26



Photographic Views

- Q24 View looking north towards No.6 The Terrace
- Q25 View looking north across front verandah
- Q26 View looking north-east towards No. 6 The Terrace

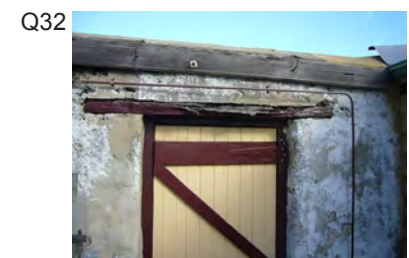
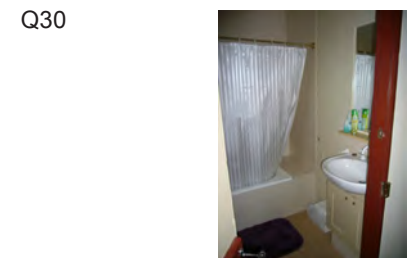
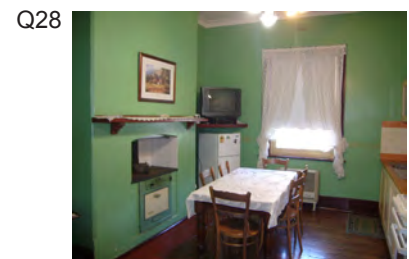
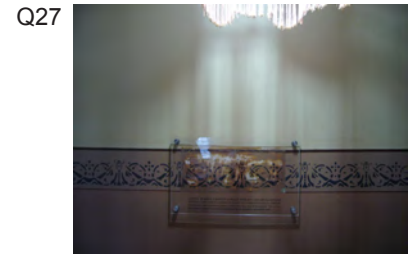


No. 6 The Terrace: Condition

Generally, No. 6 The Terrace is in good condition, however the external facilities are in poor condition.

Areas that require attention include:

- Some failure of the painted render
- Weathering of exposed timber floorboards on verandah
- Some cracking of the plaster on lath ceilings
- Water damage to the ceiling of the second bedroom
- Deterioration of painted timber surfaces, particularly the windows and frames
- Damage to some window frames
- Cracking of some internal walls
- Damage caused by damp to the internal western wall of the bathroom
- Damage caused by damp to the exterior and interior of the toilet walls, particularly the south wall
- Damage caused by damp to the exterior and interior of the laundry walls
- Deterioration of the timber lintel over the gate in the south fence



Photographic Views

- Q27 Detail of paint scrape in hallway
 Q28 View looking south-east across kitchen
 Q29 View looking west along hallway towards entry
 Q30 Detail damage to bathroom wall
 Q31 View looking south-west across rear courtyard
 Q32 Detail of deterioration of timber lintel above courtyard gate



No. 8 The Terrace: Building Fabric

EXTERNAL

Roof	Corrugated galvanized iron
Walls	Rendered and painted masonry
Openings	Timber doors and frames, timber window frames
Verandah	Concrete floor at ground; timber board floor at first; corrugated galvanized iron roof
Ground	Grass, concrete, at floor level

INTERNAL

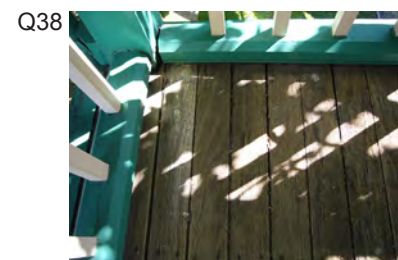
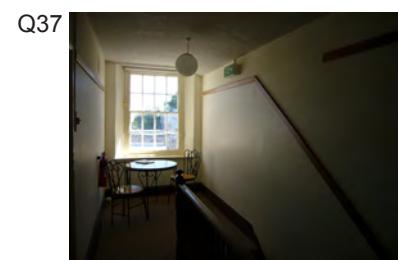
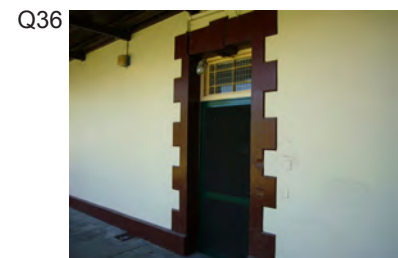
Ceilings	Various – plaster, plaster board
Walls	Plastered and painted masonry
Floors	Timber, generally carpet laid over
Openings	Timber door frames and doors
Staircase/s	Timber staircase and balustrade

No. 8 The Terrace: Condition

Generally, No. 8 The Terrace is in good condition.

Areas that require attention include:

- Drumminess of the exterior render
- Deterioration of render in some areas
- Wear to timber floorboards in north-west corner of first floor verandah
- Intrusive electrical services, especially on west facing verandah



Photographic Views

- Q33 View looking north-east towards No. 8 The Terrace
- Q34 Detail of intrusive light fitting on first floor verandah
- Q35 Detail of intrusive services on front verandah
- Q36 Detail of render failure by front entry door
- Q37 View looking north-east across stairwell
- Q38 Detail of verandah floorboards in north-west corner



No. 18 The Terrace: Building Fabric

EXTERNAL

Roof Corrugated galvanized iron

Walls Limestone with lime render and ruled joints. Bare limestone to east

Openings Panelled timber doors, timber double hung windows

Verandah Timber floor at both levels, corrugated galvanized iron roof

Ground Levels Floor level slightly above ground level, varies around building. Ground level to east, in No Man's Land, is considerably above the floor level in part.

INTERNAL

Ceilings Plaster

Walls Plastered and painted

Floors Plywood and original/ replacement timber boards

Openings Timber door frames and panelled doors

Staircase/s Recent timber and metal staircase and balustrade

Condition

Generally, No. 18 The Terrace is in fair condition.

Areas that require attention include:

- Isolated failure of the lime render
- Damage caused by damp to courtyard room walls
- Some water damage to first floor ceilings and walls
- All exterior paint deteriorating on joinery elements

Q39



Q40



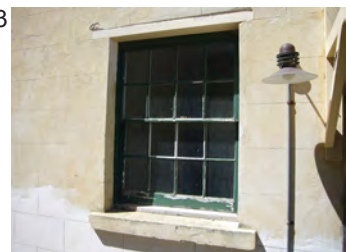
Q41



Q42



Q43



Q44



Photographic Views

- Q39 *View looking south-east towards No. 18 The Terrace*
- Q40 *Detail of northern wall*
- Q41 *Detail of damage caused by damp in kitchen area, ground floor*
- Q42 *Detail of damage caused by damp in store room, ground floor*
- Q43 *Detail of deterioration of external joinery*
- Q44 *Detail of failure of lime wash*



Stables, No. 18 The Terrace: Building Fabric

EXTERNAL

Roof Corrugated galvanized iron

Walls Limestone rubble

Openings Timber window frames with metal bars; lined timber doors

Ground Levels Bitumen at floor level to the west and north.
The natural ground level to the east and south considerably above floor level

INTERNAL

The Stables are divided north-south into two spaces.

Ceiling Corrugated metal (east), open roof space (west)

Walls Painted limestone rubble

Floors Earth (east), bitumen (west)

Openings Timber window frames with metal bars; lined timber doors

Stables, No. 18 The Terrace: Condition

Generally the exterior of the Stables, No. 18 The Terrace is in good condition, but the interior is in poor to fair condition.

Areas that require attention include:

- Some low level failure of the northern limestone façade
- Deterioration of external joinery and paint finishes
- High ground levels
- Corrosion of the metal lintels over the entry door to the western portion
- Extensive deterioration of the timber lintel over the entry door to the eastern portion

Photographic Views

Q45 View looking north-west towards the Stables, No. 18 The Terrace

Q46 View of western facade of Stables showing deterioration

Q47 Detail of failure of wall

Q48 View looking south across eastern portion of the Stables

Q49 Detail of deterioration of timber lintel above eastern entry door

Q50 Detail of corrosion of metal lintel above western entry door

Q45



Q46



Q47



Q48



Q49



Q50





4.4 Related Components

There are a number of components of the original Fremantle Convict Establishment that are in the vicinity of *Fremantle Prison*, but are located outside the site boundary. They have a strong physical and historical link to the site and are an important part of the *Fremantle Prison* setting.

Fairbairn Street Ramp

The Fairbairn Street Ramp was constructed by the convicts to provide access to the site and continuing to be the main access to the site. It is owned by the City of Fremantle.

The Fairbairn Street Ramp is an integral part of the original scheme. Spoil from the limestone quarried on the site was used to build up the inclined tramway (Fairbairn Street) on the axis of the gatehouse. By July 1853 it had reached Henderson Street. This link was eventually severed by the Parry Street bypass, constructed in the 1980s.

The Fairbairn Street Ramp forms the axial approach to the site and is intersected by both Parry Street and The Terrace. The Fairbairn Street Ramp should be reinforced as the main pedestrian access to the site and as the historic link to the City of Fremantle.

The lower part of the Ramp at the western end has been removed and comprises a bitumen car park. Limestone stairs and retaining walls have been constructed off the Parry Street bypass, which bisected the ramp. The remaining section of the ramp has been resurfaced in limestone. Large fig trees dominate the southern side of the ramp where it adjoins the Fremantle Oval. Eucalypts dominate the northern bank adjacent to the Parry Street car park.

To either side of the ramp are areas of land located below the batter banks of The Terrace. On the northern side, the Parry Street Carpark is located on the site of the *Fremantle Prison* vegetable garden. To the southern side, Fremantle Oval is located on the area of land that was formerly the Barrack Field. Both retain the topographical features relating to their early use. (Refer Figure 38)



Photographic Views

F1 View of Fairbairn Street Ramp, looking northwest

F2 View of Fairbairn Street Ramp, looking west

F3 View of Fairbairn Street Ramp, looking east towards the Gatehouse

F4 View of Fairbairn Street Ramp, looking east



FREMANTLE PRISON
CONSERVATION MANAGEMENT PLAN

4

February 2010

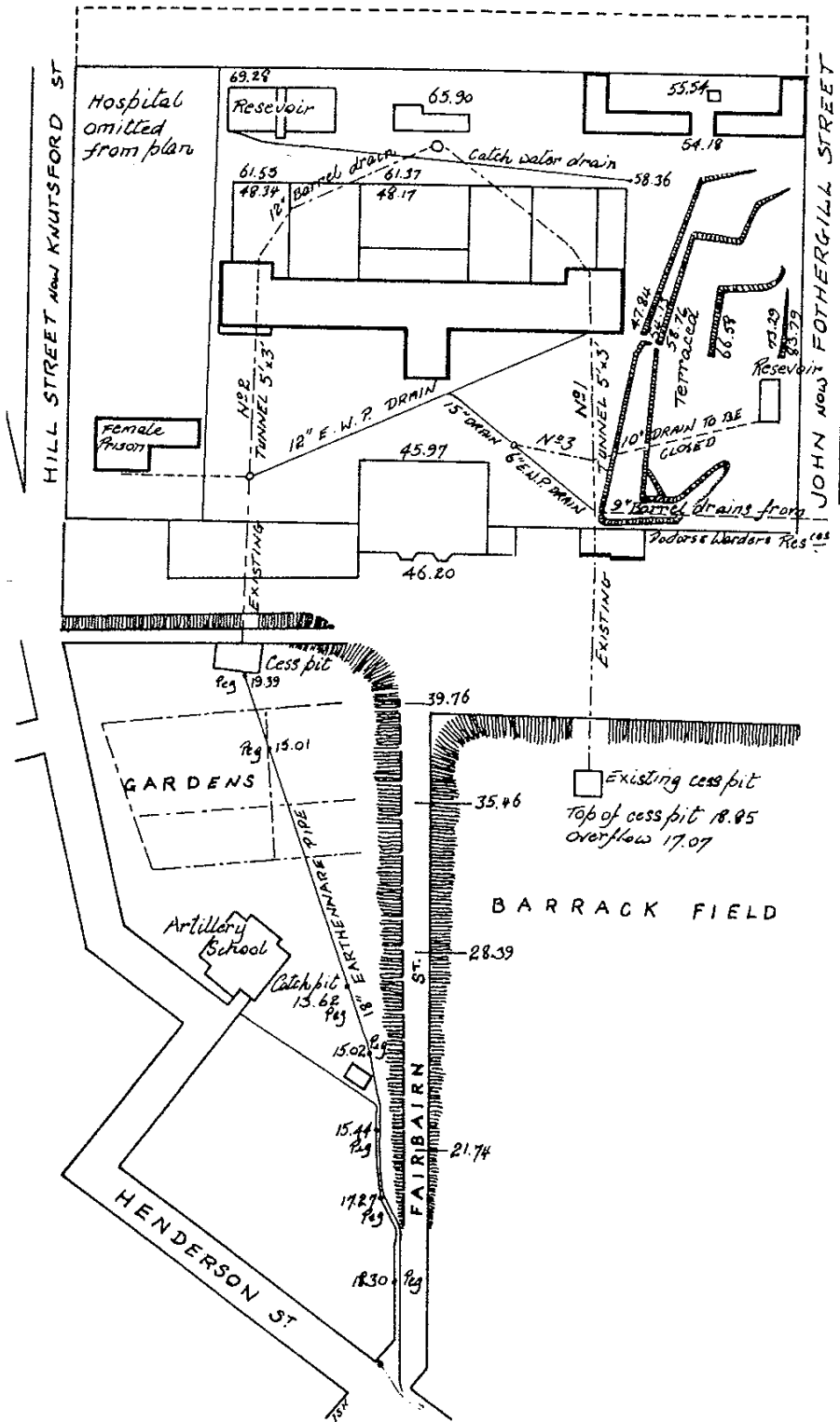


Figure 38. Plan of Fremantle Prison in 1896 showing the gardens and Barrack Field to either side of the Fairbairn Street Ramp (J S Kerr, 1998, Figure 11)



Warders' Cottages

The Warder's Cottages (also known as the Henderson Street Cottages) are not located within the *Fremantle Prison* boundaries, however they have a strong physical and historical link to the site and are owned and managed by the state government.

The Warder's Cottages are located along the southern side of Henderson Street (No.s 7-17, 19-29, 31-41) and were originally constructed in the 1850s as part of the Fremantle Convict Establishment. They are two-storey terrace houses built of local limestone with corrugated iron roofs. Most of the cottages remained in continuous use as warder accommodation up to 1989 when they were sold to Homeswest for use as public rental accommodation.



Photographic Views

W1 View of Warder's Cottages, looking northeast

W2 View of Warder's Cottages, looking southeast

The Knowle

The Knowle is located within the Fremantle Hospital site to the southwest of *Fremantle Prison*. It was designed by the Comptroller-General Edmund Henderson as his residence and was completed in 1853. The Knowle is a two-storey limestone building distinctive for its three bay form and two-storey timber verandah to the west façade.

In 1867, it became a convict invalid depot and then in 1895 it became a public hospital. The Knowle is currently used by the Fremantle Hospital and Health Service for administrative purposes.



F R E M A N T L E P R I S O N
C O N S E R V A T I O N M A N A G E M E N T P L A N

4

February 2010
